



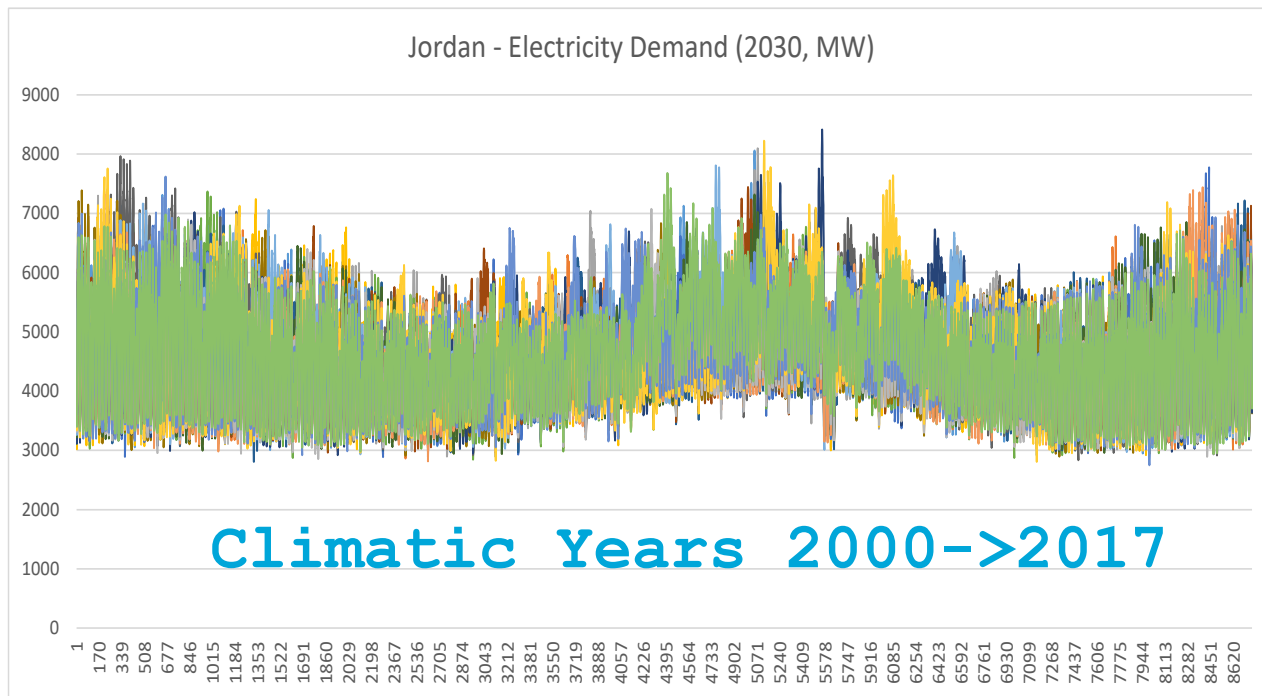
Innovation in RES integration in the Mediterranean region

RGI Conference in Barcelona, 9th April 2019

Emmanuel BUE - European & International Affairs Department - RTE



TRAPUNTA, new approach for load-temperature sensitivity study

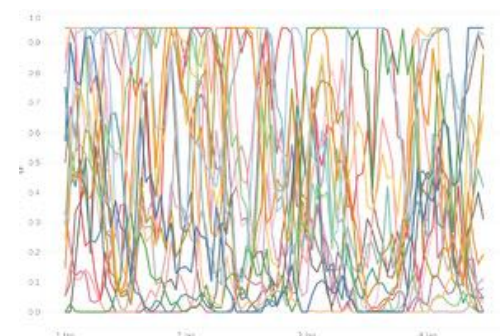
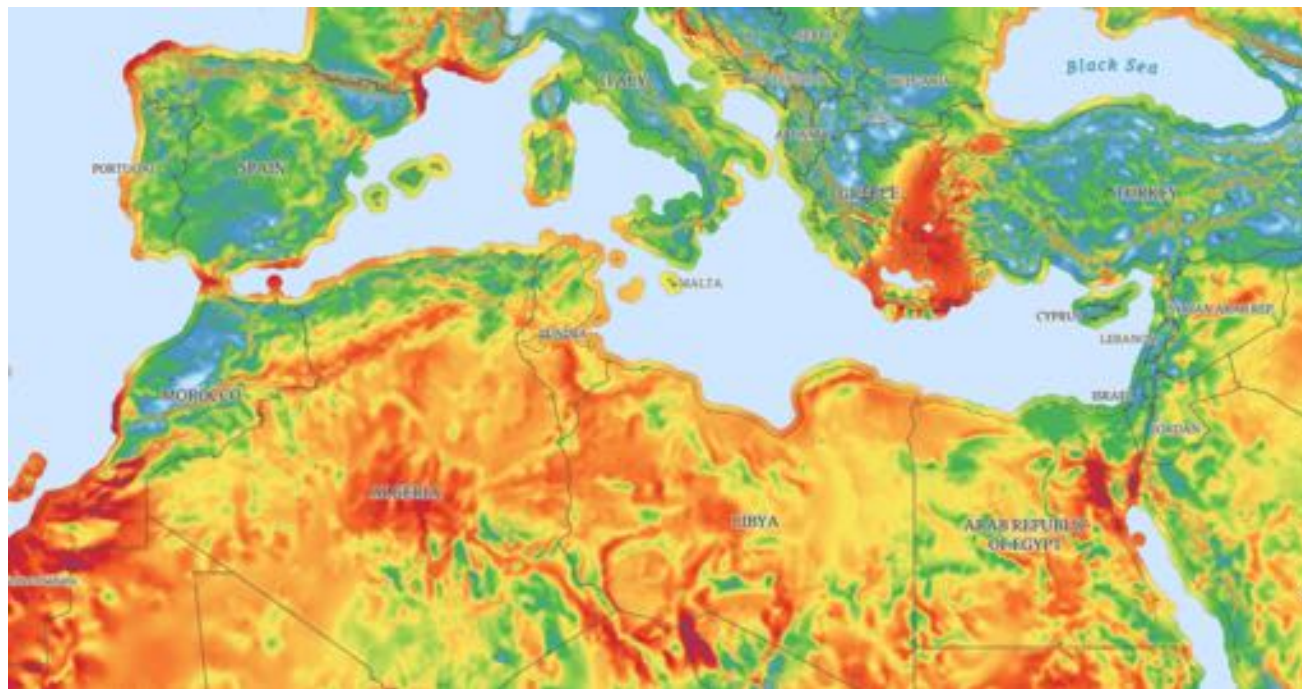


Data Base
Tool
Training
User group



PECD, Pan European Climate Data Base

RES hourly Time-series



Data Base Calibration



antaresimulator

ANTARES-SIMULATOR, AN OPEN SOURCE SOFTWARE TO SIMULATE YOUR SUSTAINABLE ENERGY TRANSITION

