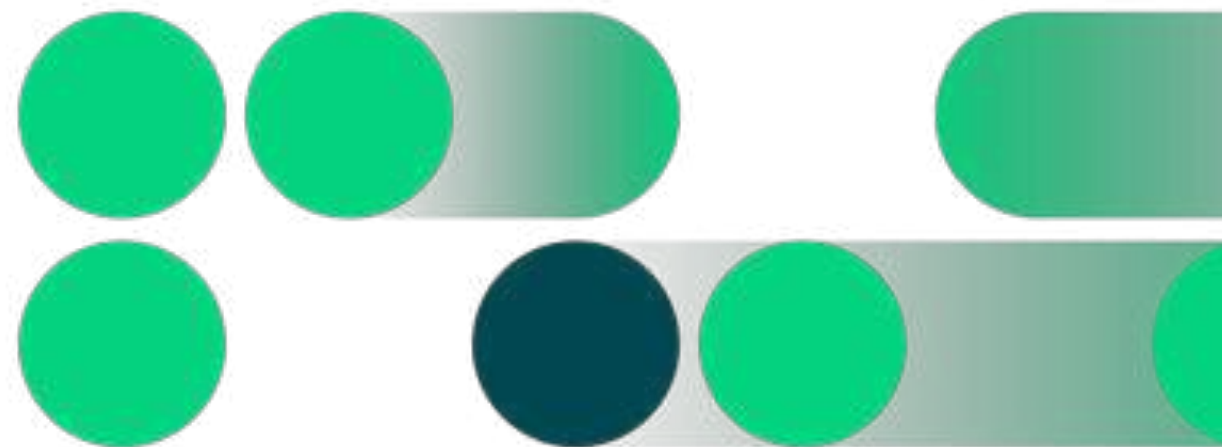


# Integrated Vegetation Management (IVM) – ‘Green Corridors’ Training Workshops

Vegetation Management REN’s Strategy



13<sup>th</sup> June | Poix-Saint-Hubert, Belgique

## DIREÇÃO / ÁREA

**Aviso:** A reprodução ou comunicação, escrita ou verbal, ainda que parcial, deste documento, sem aprovação prévia da **REN, SGPS**. É estritamente proibida e punida nos termos da lei. As informações contidas neste documento são propriedade da REN. Versões impressas deste documento podem não estar atualizadas e este documento assume o estado de “Cópia não controlada”.

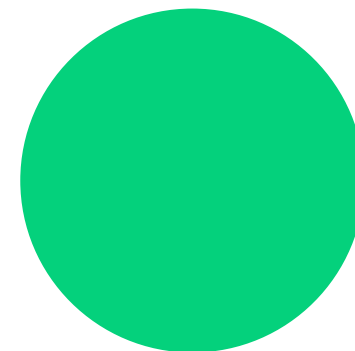
**Data:** **Proprietário:**

**Versão:** v1.0 **Aprovado por:**

**Classificação:** **Usado Interno** **Restrito** **Confidencial** (Inserir 1 opção) **Lista de distribuição:**

# 01

REN – REDES ENERGÉTICAS NACIONAIS



# Vegetation Management REN's Strategy

REN

 **Very High Voltage electricity transmission and technical management National Electric System**



Concessionaire and operator of the Electricity Transmission Network in Portugal, with more than 9,000 km of very high voltage lines and buried cables.

Concessionaire and operator of the Gas Transport Network in Portugal, with around 1,400 km of pipelines.



**High Pressure gas transport and technical management National Gas System**





# Vegetation Management REN's Strategy

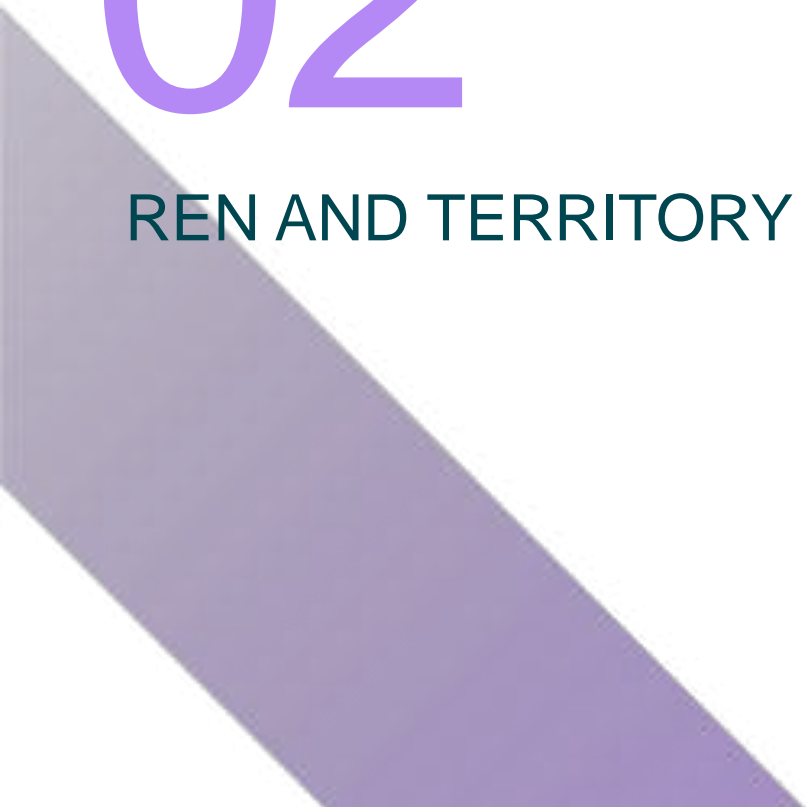
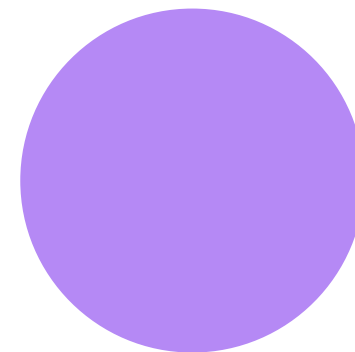
REN

REN's mission is to ensure the **uninterrupted supply of energy** throughout the country, contributing to **community development** and improving the **quality of life** of the Portuguese people.



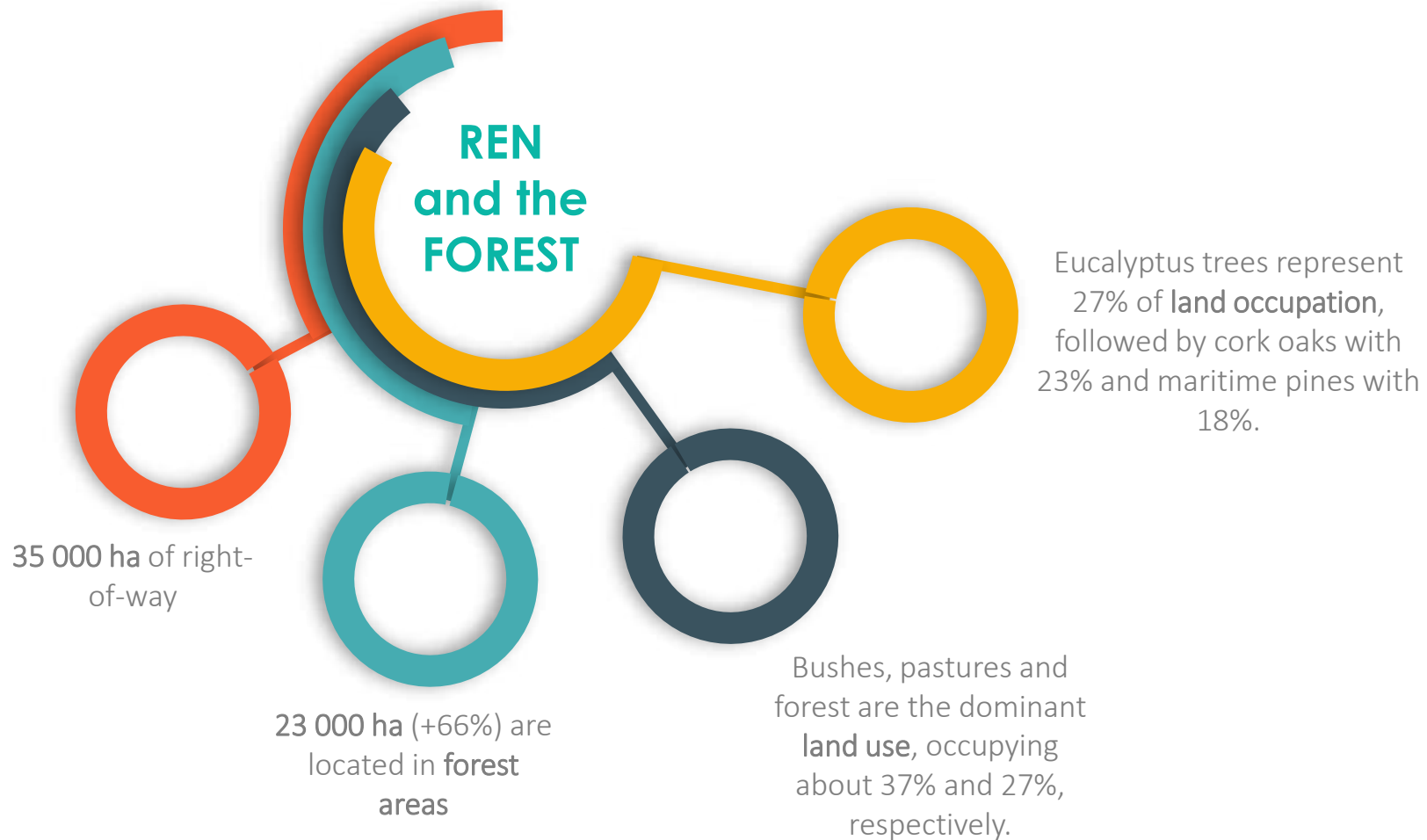
# 02

## REN AND TERRITORY



# Vegetation Management REN's Strategy

REN and TERRITORY





# Vegetation Management REN's Strategy

REN and TERRITORY

REN Right of Way in  
Forest Areas

23 000 ha



# Vegetation Management REN's

## REN and TERRITORY

- ▶ 35.000 ha of right-of-way to manage
- ▶ 66% located in forest areas – 23.000 ha
- ▶ 1.000 ha (+ 300 installations in the country, mostly in rural spaces)
- ▶ 9.000 ha/year of vegetation management
  - ▶ Right-of-Way (8.000 ha)
  - ▶ REN properties (1.000 ha)
- ▶ + 200 active partners' employees (daily average) in vegetation management.





# 03

## IVM STRATEGIC OBJECTIVES





# Vegetation Management REN's Strategy

## IVM STRATEGIC OBJECTIVES

### SUSTAINABILITY

Integration of REN's NATURAL CAPITAL, based on the principle of creating shared value and promoting Ecosystem Services aligned with REN's strategic SDGs

### SOCIETY

Compatibility with Local Communities and Environment

### SECURITY

Adaptation of energy infrastructure to climate change, namely to extreme weather phenomena

### COSTS

Cost Reduction through Increased Intervention Cycles ( $\geq 3$  years)

Uso Interno / Restrito / Confidencial (apagar as opções não aplicáveis)



### LEGISLATION

DL 82/2021  
Infrastructure protection against rural fires (SGIFR)

### LEGISLATION

DR 1/1992  
Guarantee of Electricity Transmission Network security conditions

### LEGISLATION

DL 11/1994  
Guarantee of Gas Transport Network security conditions

# Vegetation Management REN's Strategy

## IVM STRATEGIC OBJECTIVES

# Vegetation Management REN's Strategy

## IVM STRATEGIC OBJECTIVES





# Vegetation Management REN's Strategy

## IVM STRATEGIC OBJECTIVES



# Vegetation Management REN's Strategy

## IVM STRATEGIC OBJECTIVES



# Vegetation Management REN's Strategy

## IVM STRATEGIC OBJECTIVES



# Vegetation Management REN's Strategy

## IVM STRATEGIC OBJECTIVES

### SUSTAINABILITY

Integration of REN's NATURAL CAPITAL, based on the principle of creating shared value and promoting Ecosystem Services aligned with REN's strategic ESG's goals





# Vegetation Management REN's Strategy

## IVM STRATEGIC OBJECTIVES

In collaboration with official authorities and with the involvement of local communities and landowners, between 2010 and 2022, REN proceeded with the land reconversion of 3,926 ha of forested area, mainly occupied with eucalyptus trees, involving 22,279 landowners.



# Vegetation Management REN's Strategy



Grazing

Invasive  
species  
management

Riparian galleries  
restoration

Ecological Restoration  
of Native Forests

Fuel/Vegetation  
removal



# OBRIGADO

Thank you

