



giving
nature
a home

Environmental mapping of power line PCIs

Ivan Scrase and Suzie Lukacova

3rd European Grid Conference
Brussels, December 4 2013





Species at risk of collision

Raptors – eagles, vultures, buzzards

Soaring water birds – storks, pelicans, cranes

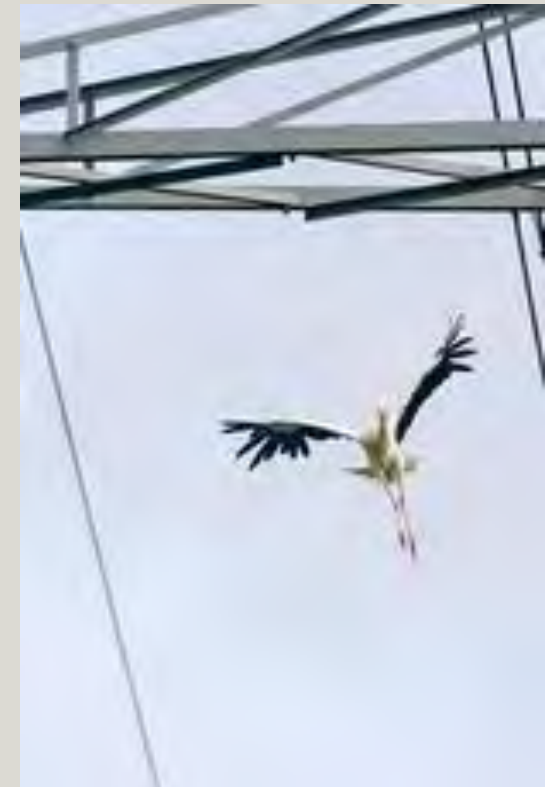
Large bodied birds - swans, geese, ducks, bustards

Other water birds – curlews, lapwings, golden plover



Mapping of Projects of Common Interest

- PCIs are to be considered of public interest *from an energy perspective*.
- The Habitats Directive protects Europe's most important wildlife sites and species.
- It enables development, but requires evidence that it will not cause harm.
- Mapping is useful to identify and avoid potential issues and avoid delays.
- Four draft maps of power line PCIs overlaid with the SPAs filtered for the most vulnerable bird species



Purpose / next steps

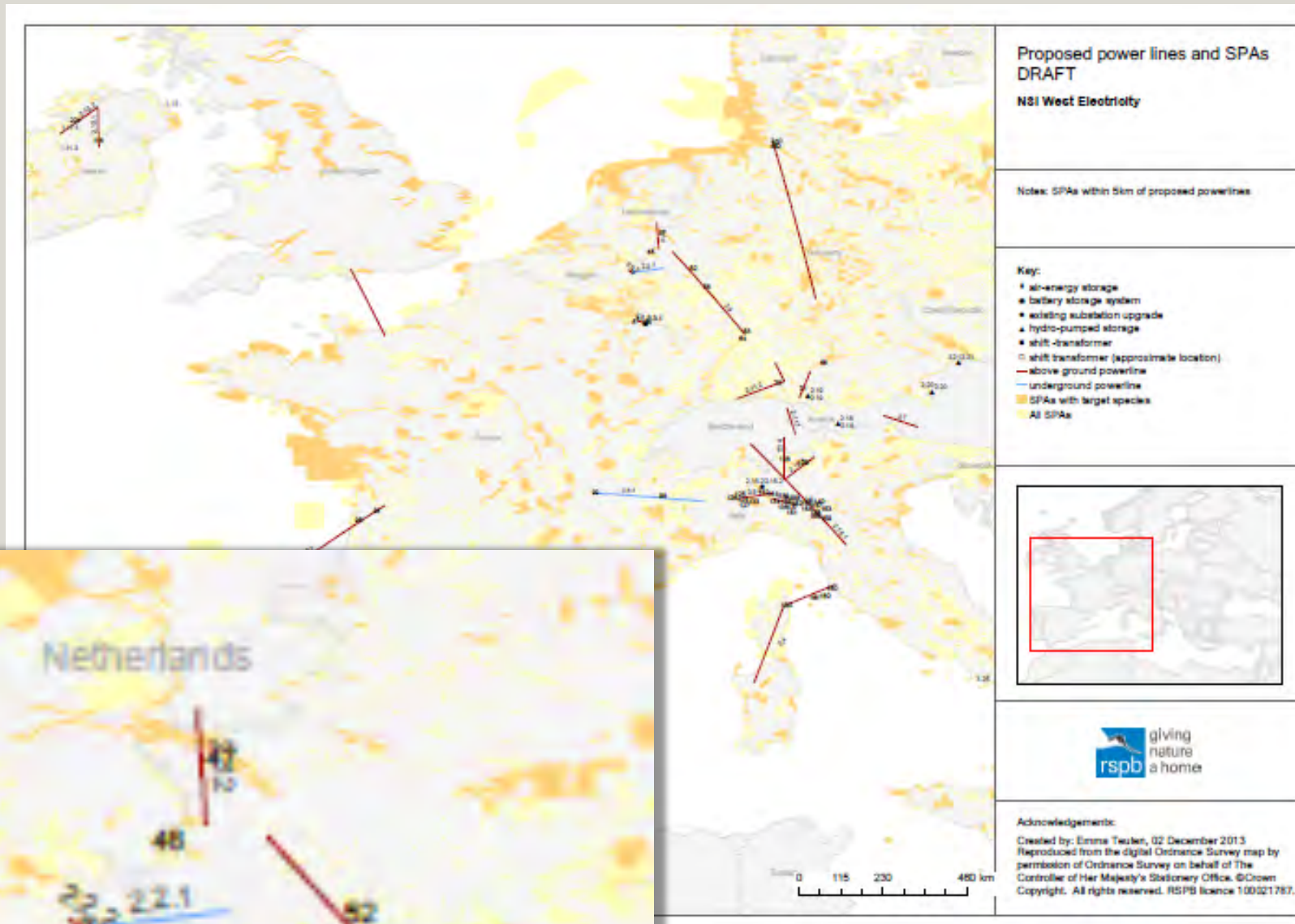
- Identify power line PCIs that could create significant collision risk for vulnerable bird species.
- Enable TSOs, the Commission, national competent authorities and stakeholders to take timely actions to avoid harm to birds.
- Well-planned PCIs - in the European 'common interest' in a broader sense than just energy.



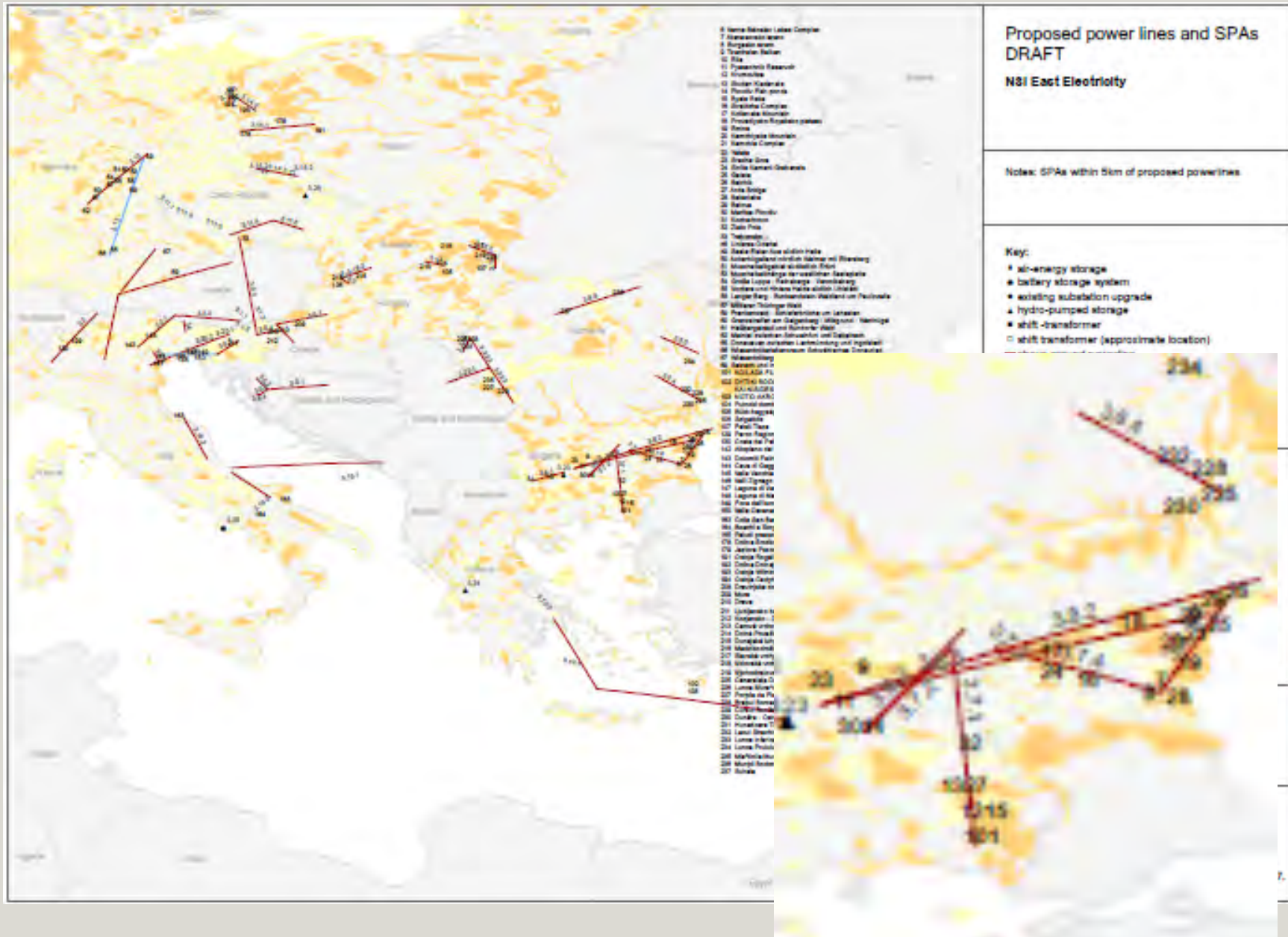
Draft map 1: NSI West Electricity



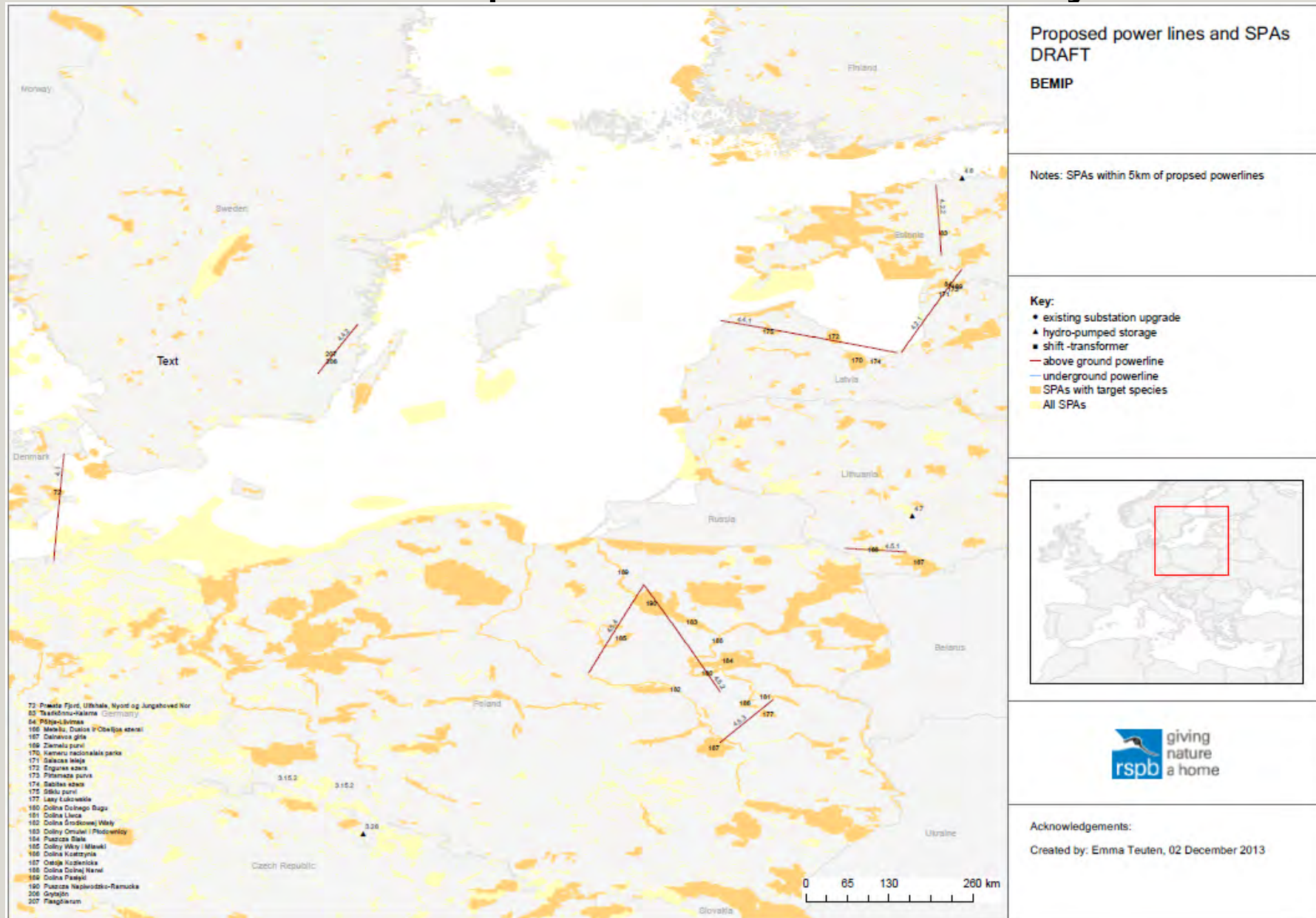
giving nature a home



Draft map 2: NSI East Electricity



Draft map 3: "BEMIP" Electricity



Draft map 4: Northern Seas Offshore Grid

