

WEBINAR

Data Sharing as a Win-Win for Wildlife and Infrastructure

TUESDAY

12 MAY 2026

15:00 - 16:15 CEST



RISKY 

OSCARS
Open Science Community Action
for Research & Training

 Funded by
the European Union

Renewables 
Grid Initiative

 Co-funded by
the European Union

Housekeeping

1

Technical aspects

Mute yourself

Rename yourself to
'Name, Organisation'

2

Questions?

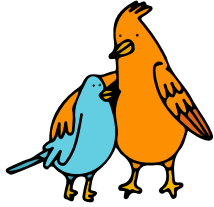
Write your questions to
speakers in the chat

3

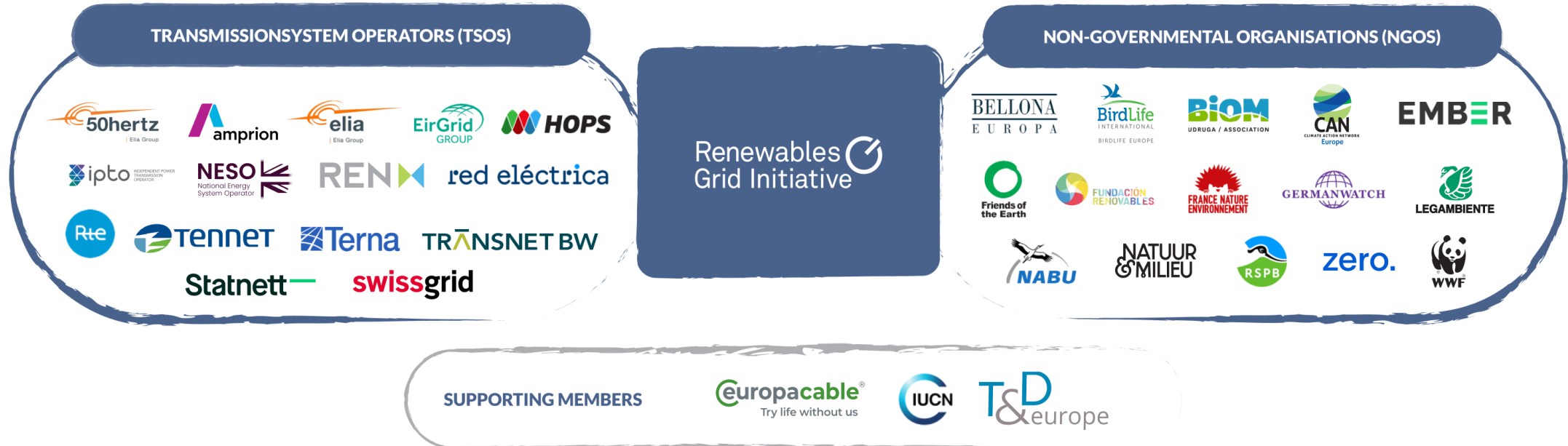
Recording

This webinar is recorded
and will appear on the
RGI & RISKY websites

About RGI



We engage in an energy transition ecosystem of actors and promote **fair, transparent, sustainable grid development** to enable the growth of renewables to achieve full decarbonisation in line with the Paris Agreement.



Data sharing

- Wildlife mortality is widespread, but data are fragmented & siloed
- Without sharing we miss patterns, predictions & solutions
- Shared data allows to identify local hotspots & continental trends which leads to biodiversity-friendly infrastructure
- Barriers: confidentiality, time, misuse concerns
- Can reduce costs, speed up permitting, strengthens trust

Our message today: Data sharing = collaboration & strategic investment

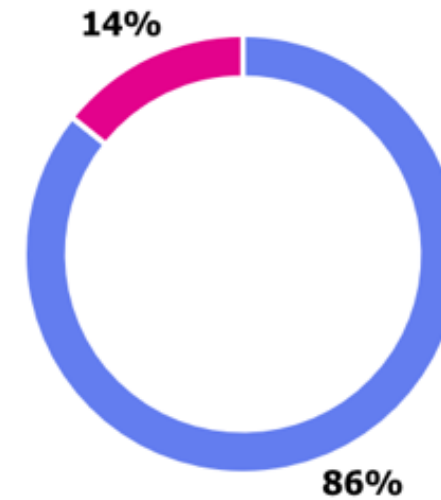
Data sharing

- RGI's survey in 2025 to understand
 - How stakeholders collect & if/how they share mortality data
 - What conditions could enable data sharing and greater collaboration
- 85 responses: 18% Grid operators, 3.5% Renewable energy developers, 8% Transport agencies, 2.4% Regulators, 20% NGOs, 27% Consultancies

Data sharing

3. Do you collect data on bird or other wildlife mortality near your infrastructure?

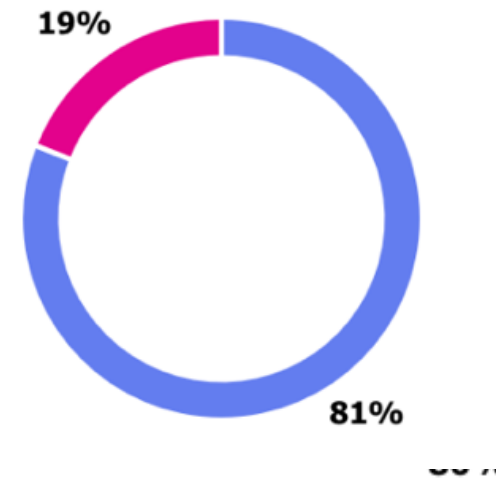
● Yes	72
● No	12



Data sharing

6. Do you share wildlife mortality data with any third parties (e.g., authorities, NGOs, researchers, platforms)?

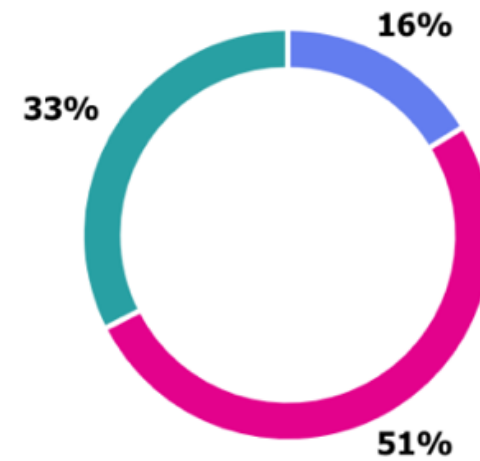
- Yes 68
- No 16



Data sharing

8. Is the data publicly accessible?

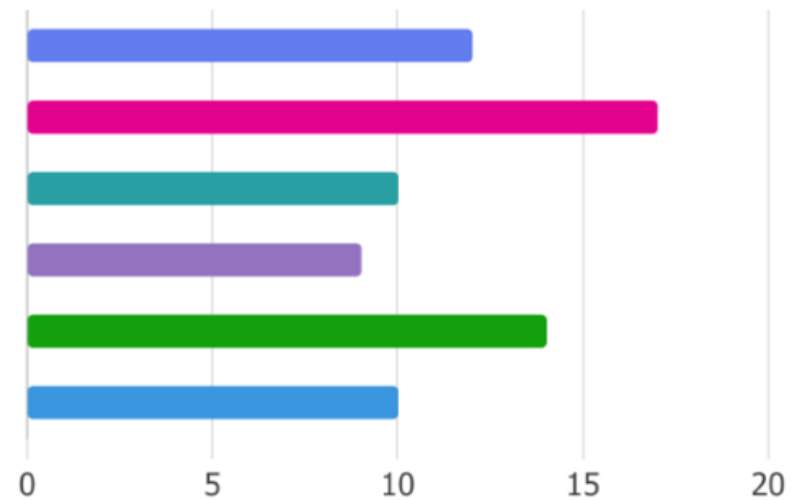
● Yes, fully	13
● Partially	41
● No	26



Data sharing

15. What are the main reasons for not sharing wildlife mortality data? (Select all that apply)

● No data is collected	12
● Data is sensitive or confidential	17
● Lack of internal capacity	10
● No perceived benefit	9
● Legal or liability concerns	14
● Other	10



Agenda

Welcome & introduction
Manon Thiel, Renewables Grid Initiative

RISKY Project
Clara Grilo, CIBIO BIOPOLIS

Case study 1: The value of global biodiversity data sharing
Rui Figueira, The Global Biodiversity Information Facility, Portugal

Case study 2: Practical experience & benefits of data sharing in Belgium
Olivia Geels, Elia Transmission Belgium

Panel discussion: Challenges & opportunities of data sharing
Larissa Biasotto, BirdLife International
Tremaine Gregory, WWF US
Olivia Geels, Elia Transmission Belgium
Ruben Moreno-Opo, MITECO
Clara Grilo, CIBIO BIOPOLIS

Q&A