



Introduction to GINGR's Linear Methodology

Adrián Maté

Linear Technical Working Group Lead

GINGR

Global Initiative for Nature,
Grids and Renewables

Recent GINGR Report



Snapshot Report

Current state of Environmental Reporting for the Renewables and Grid Sector

P. Stefanoudis, N. Sheikh, A. Cook & L. Weatherdon

March 2026



Key Findings: How well does current reporting support global Nature-Positive goals?

Good coverage in reporting frameworks

- ✓ Momentum toward integrating biodiversity considerations into business decision-making
- ✓ Business disclosure and governance (GBF targets 14 and 15) most frequently addressed
- ✓ Ecological targets—spatial planning (T1), ecosystem restoration (T2), and pollution reduction (T7)—are increasingly considered.

Poor coverage in reporting frameworks

- ⚠ Species extinction (T4) & invasive species (T6) not explicitly addressed
- ⚠ Nature's Contributions to People (T11) and Resource Mobilisation (T19) barely covered

...representing the biggest opportunity for future improvement



Key Findings: Companies face growing pressure to report – but struggle to do so consistently

What companies are doing

- CSRD as the main regulatory driver
- Voluntary frameworks (SBTi, TNFD, CDP, GRI 101, SBTN) are used variably
- Some have developed internal tools to aid reporting

Key challenges

- **Data:** inconsistent baselines, fragmented data collection systems, lack of automation
- **Reporting burden:** Varying national requirements of EU Directives
- **Nature-Positive confusion:** unclear definitions; lack of shared metrics
- **Cumulative impacts:** poorly addressed, particularly offshore



How can GINGR address these GAPS?

REPORTING GAPS

Companies cannot compare impacts or benefits

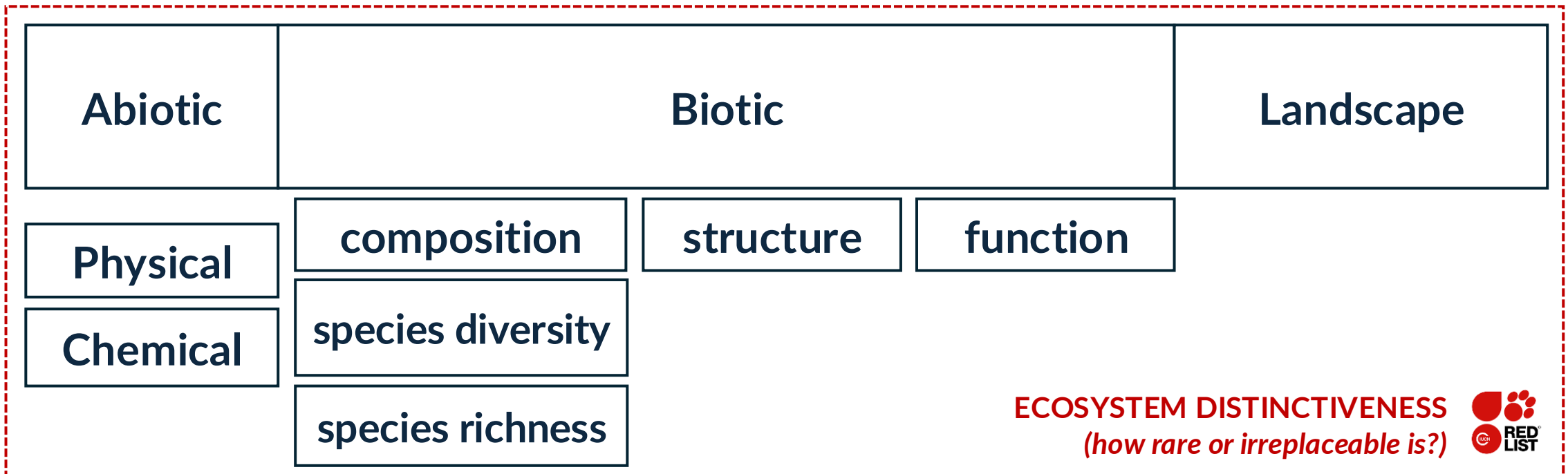
Regulators cannot value biodiversity

- Reduces permitting risk (faster approvals) via **Spatial Analysis**
- Aligns with CSRD / TNFD and regulator languages
- **Enables quantifiable Nature-Positive outcomes** (via SEEA-EA)
- Integrates into TOTEX decision-frameworks



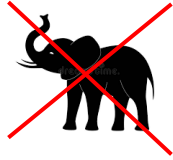
THE ECOSYSTEM CONDITION

(quality of the ecosystem)



ECOSYSTEM EXTENT
(area in Ha)





A

Measure Impacts & Benefits

B

Baselines & Monitoring

(weak EIAs, biased, poor monitoring)

Adaptive Mgmt. & MH

NbS

IVM

WireMarkers



Tools for Decision Makers

SEA

EIA

HARMONISE

- Tools
- Methods
- Outcomes

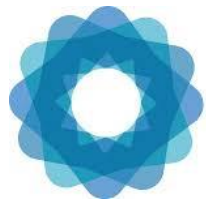
C

Translate Scientific to Accountancy

(Biodiversity Units of Gain and Currency)

Piloting

Climate Bonds INITIATIVE



System of Environmental Economic Accounting

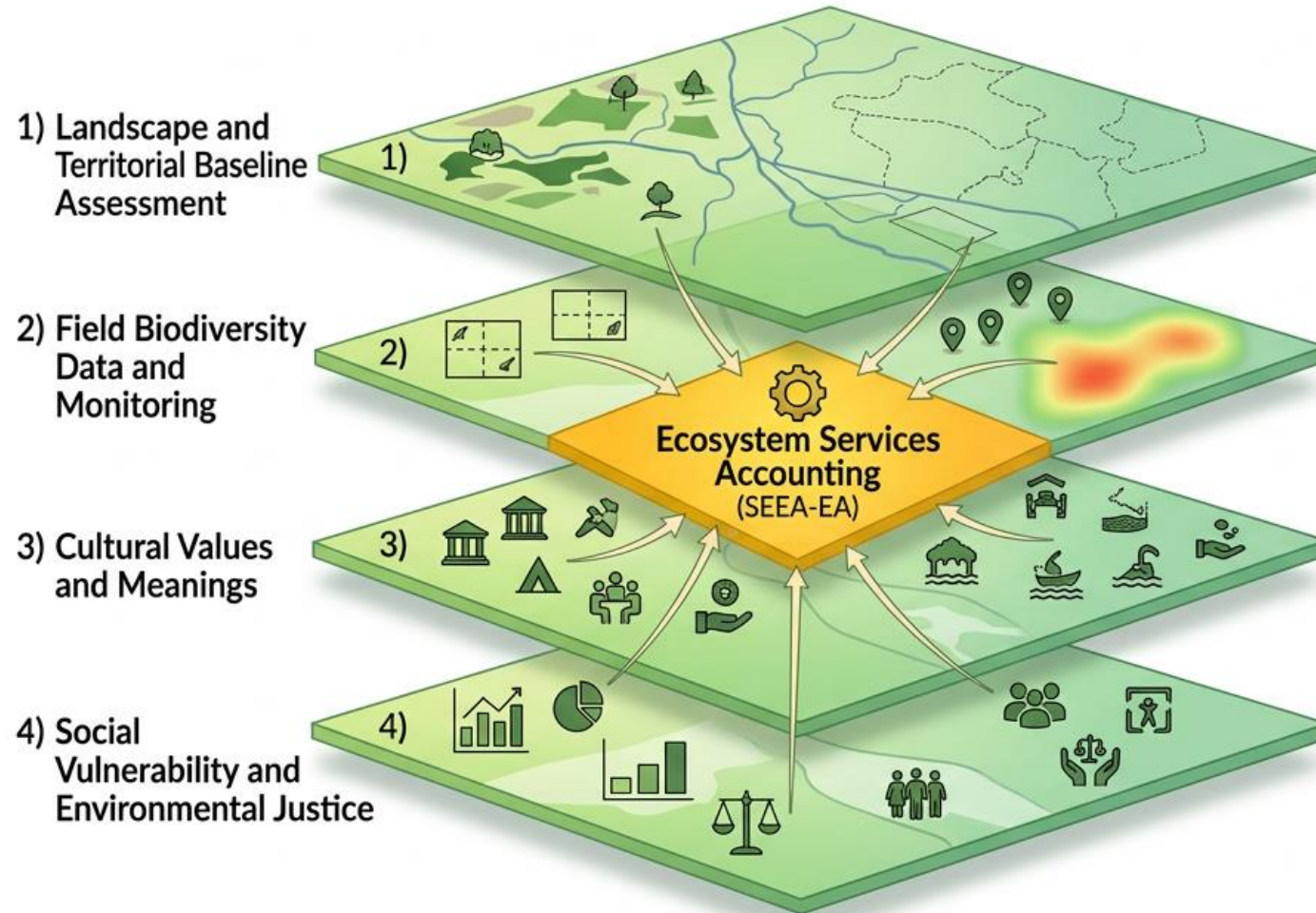
D

Tools for Policy Makers, Legislators and Regulators

(Capex/Opex/Totex) and Finance Sector



The 4 Petals - Collecting Data in Spatial Format



GEOSPATIAL-CONCEPTUAL DATA LAYERS FOR SEEA-EA INTEGRATION

- 1) **Landscape & Territorial Baseline:** Integrating landscape structure and ecological condition.
- 2) **Field Biodiversity Data:** Generating robust data through field monitoring and loops.
- 3) **Cultural Values:** Capturing place-based knowledge and local meanings.
- 4) **Social Vulnerability & Justice:** Assessing and ensuring equitable outcomes.

All layers feed into and are synthesized by **Ecosystem Services Accounting (SEEA-EA)** to inform decisions.



The 4 Petals - Collecting Data in Spatial Format



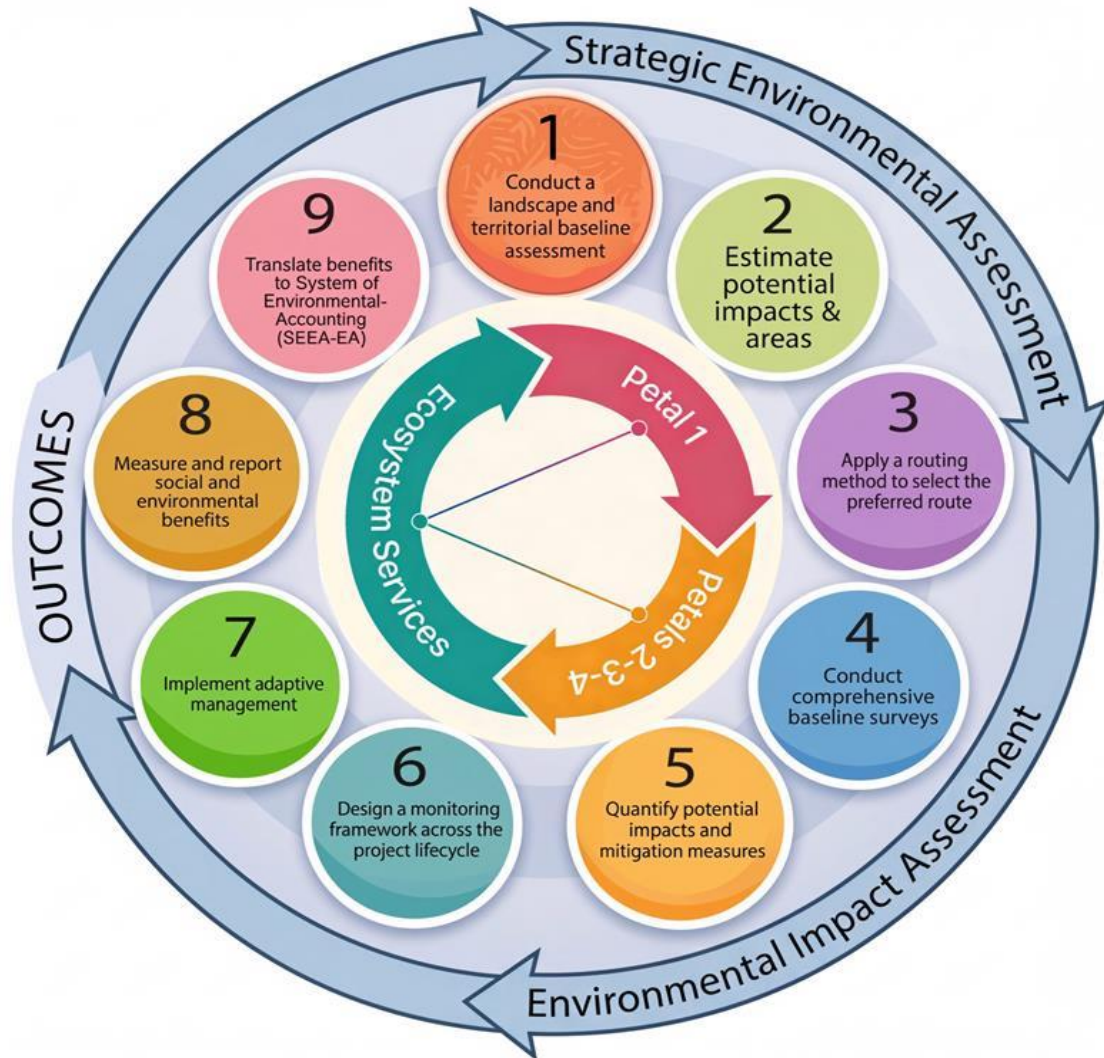
GEOSPATIAL-CONCEPTUAL DATA LAYERS FOR SEEA-EA INTEGRATION

- 1) Landscape & Territorial Baseline:** Integrating landscape structure and ecological condition.
- 2) Field Biodiversity Data:** Generating robust data through field monitoring and loops.
- 3) Cultural Values:** Capturing place-based knowledge and local meanings.
- 4) Social Vulnerability & Justice:** Assessing and ensuring equitable outcomes.

All layers feed into and are synthesized by **Ecosystem Services Accounting (SEEA-EA)** to inform decisions.



Following 9 Steps

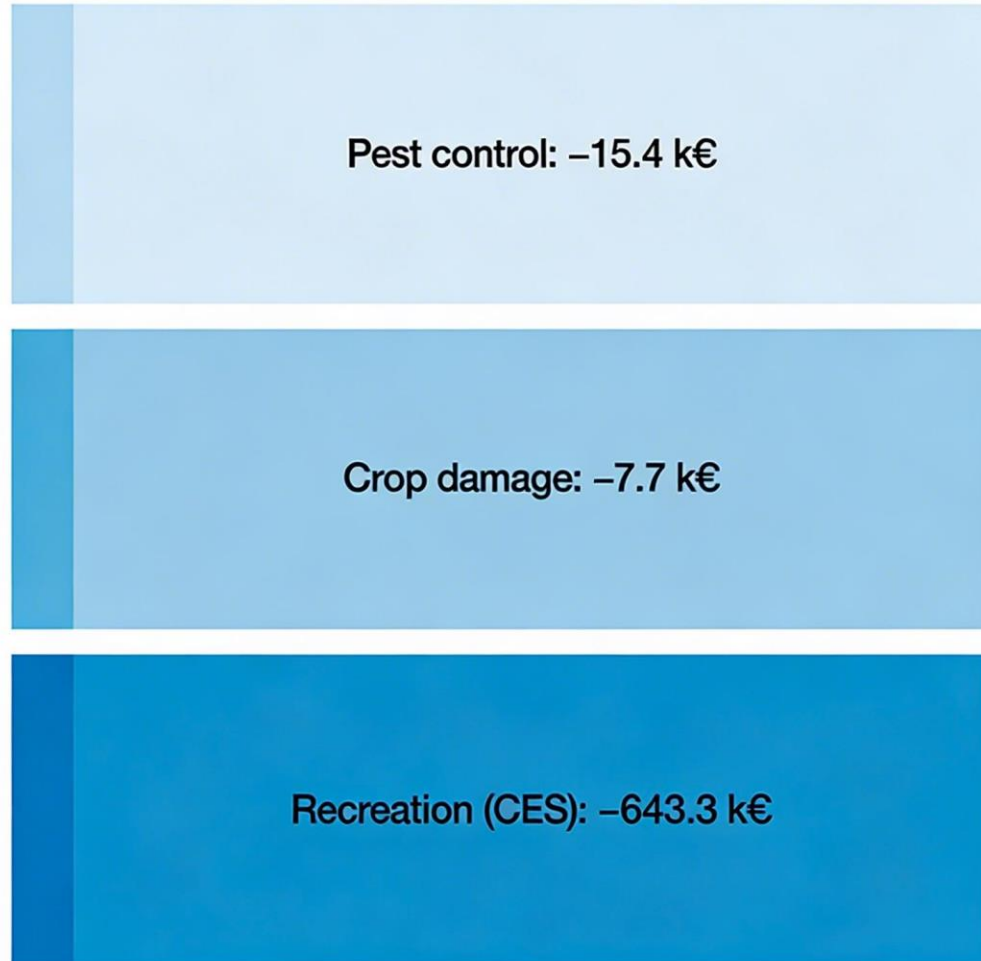


- The 4 Petals provide the real evidence to capture externalities systematically across landscape, biodiversity, social vulnerability, and cultural values.
- The 9 Steps show how externalities affect routing and design choices, so they belong in Pre-Capex/TOTEX, and cannot be treated as externalities.
- SEEA-EA translate negative and positive impacts into a language regulators can understand.
- TOTEX logic is to support best whole-life outcomes, not just cheapest asset build, which strengthens the case for pricing in environmental and social externalities



What changes in grid planning using GINGR?

Conventional management



Integrated Vegetation Management (IVM)

