




e-on

Ecological Corridor Management

Nature Networks Webinar

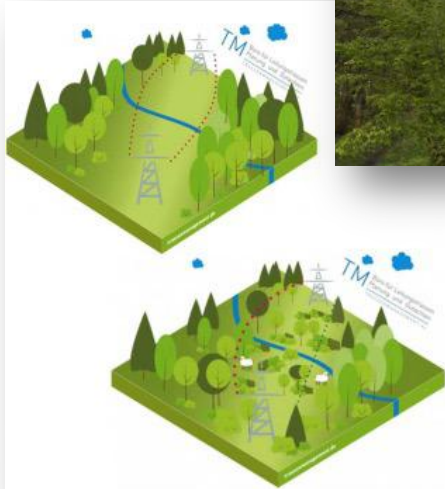
Jun 9, 2022, 12:00 PM

Renewables
Grid Initiative 

Ecological Corridor Managemet

A success story after 30 years (1992 – 2021)

The international roll-out in E.ON



Thomas König:
„ECM is how we contribute to secure ecosystems“

ECM purpose – Why are we doing ECM?



Ensure
security
of supply

Support **biodiversity** and valuable **species**

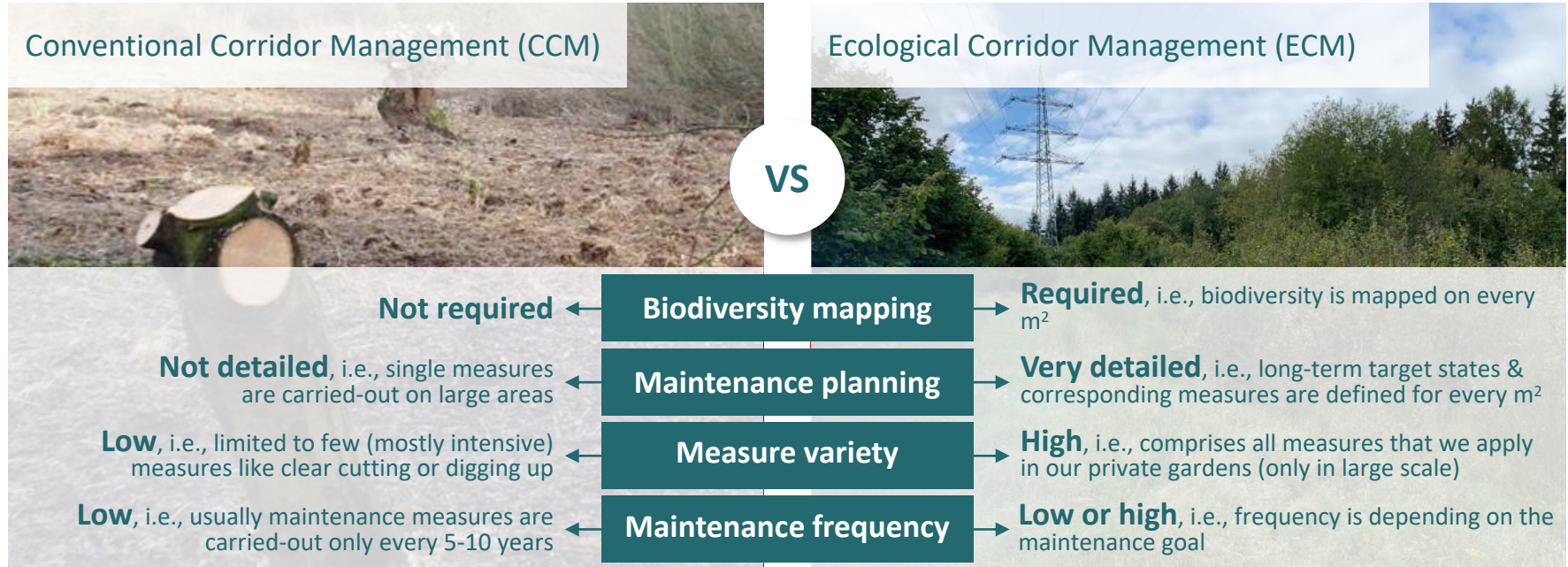
Be a **change-maker** - live up to our **social commitment** as a provider critical infrastructure provider

Ensure **future-readiness** of our assets and anticipate rising stakeholders' expectations

Contribute to E.ON's **sustainable strategy** and deliver on **ambitious targets**



By introducing Ecological Corridor Management, we will significantly change the way we maintain our corridors

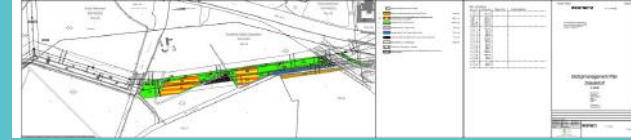


ECM Case Study - ECM in Westnetz = A success story

ECM began in Westnetz/RWE back in 1992

Status of today:

- 6. 700 ha Vegetation areas (e. g. forest)
- 95% are biologically mapped and plotted
- 99 ECM projects
- Approx. 1,200 ECM plans in the area of Westnetz



The ECM-Mindset/The ECM-Basic Rules

1. Displace fast-growing trees and promote slow-growing trees and bushes
2. After 5-10 years, a closed stock of slow-growing species of trees and bushes has developed
3. 5 times more biodiversity in our corridors
4. Care-intensive and minimise public-relevant conflict potentials

ECM Case Study

The ECM-Project “Düsseldorf” – Bl. 0059, M. 13-15

Vegetation today – after about 20 years



Open spaces (meadow), slow-growing trees and bushes → High biodiversity

ECM Project targets – until 2029

Our external communication on ECM in 2021

*“We will turn **70,000 ha** along 13,000 km of high voltage power lines into **biotopes and habitats** by the **end of the decade**” (CMD)²*

e.on

*“We will invest
30 M€
(L. Birnbaum)¹*

Our internal planning on ECM target achievement



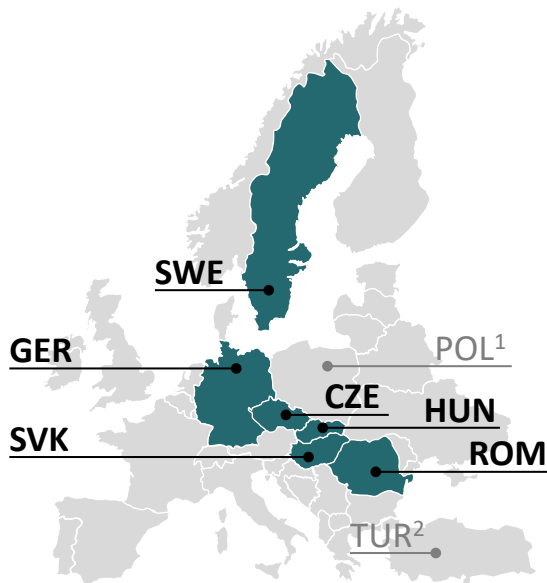
Until end of Q1 2023,
we will **finalize the ECM rollout**
*i.e., all DSOs have
commissioned biologists with
maintenance planning*



Until end of 2029,
we will create **valuable biotopes on 70,000 ha**
beneath our powerlines

Baselining study of ECM: identified first ECM “success stories”

Countries within the scope of ECM



Baselining highlights & success stories



Interviews with the local Corridor Mgmt. experts, we saw a **positive sentiment** and **high commitment**



WEN has **fully implemented** ECM along its 110kV powerlines



SWE uses a **highly digitized** approach based on **satellite data & AI**



SVK VSD collaborated with **UNEP** and employs **six inhouse ecologists**

1) POL is not in scope, as their powerlines are located predominantly in urban areas

2) TUR is not in scope due to the shareholding situation in Enerjisa

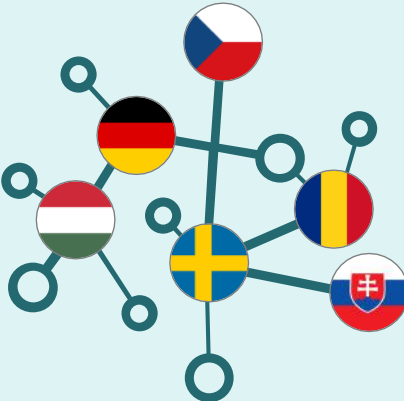
Roll-Out needs an **active ECM community**: Share information & best practices and develop new skills







ECM

To successfully operationalize ECM, we need to develop **new skills**, such as **communicating purposefully** and **understanding ecosystems**

Establish an **active ECM community** among local Corridor Management experts to enable an E.ON-wide **information** and **best-practices sharing**

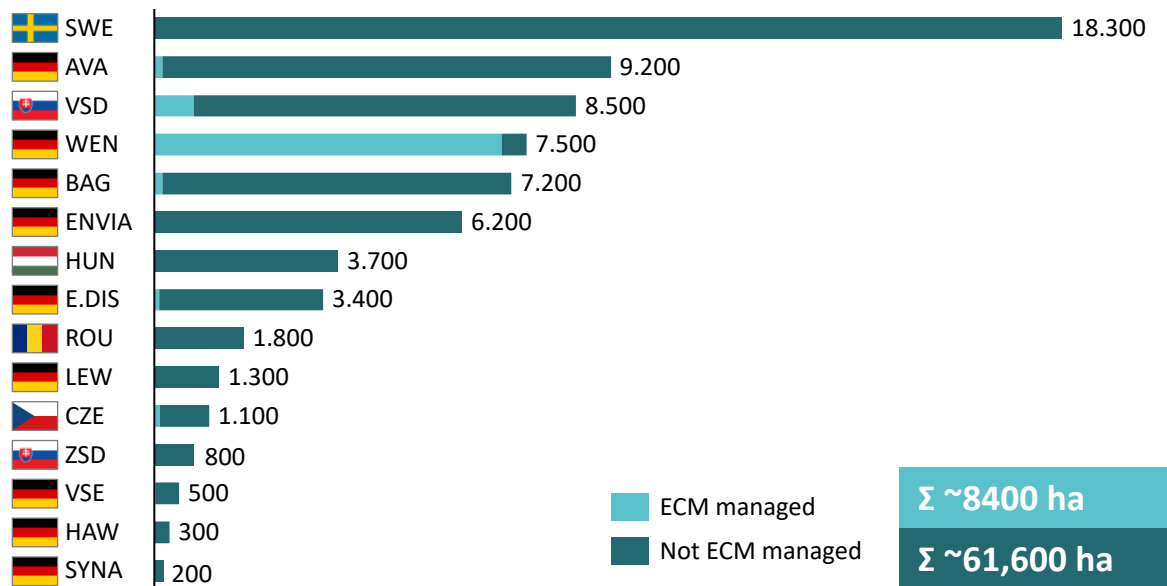


-  **Collaborate** on common platforms
-  **Exchange information and learn from each other**, e.g., in peer reviews
-  **Share best-practices**, e.g., at the ECM summit
-  **Communicate your successes**, e.g., to concession experts

DSOs ECM targets - top-down and bottom-up estimates

Now DSOs need to validate their targets

Preliminary ECM targets per DSO in [ha]



Criteria to identify areas in scope of ECM



Identify all areas in **corridors** that are at least **20 meters wide** with a **powerline** that is, at its lowest point, **not lower than 6 meters** above the ground



Analyze these areas for **potential to increase biodiversity through ECM** (e.g., forests, peatlands, wetlands)



In Germany, the primary focus is on areas beneath our **110 kV** powerline corridors in **forests**

All DSOs need to validate their respective targets by end of August



ECM in E.ON A success story

Why?

We have the opportunity to make a valuable input to the protection of
nature and species in our corridors

Our corridors are to be maintained by us, so let's go the right path together!






Ecological Corridor Management

Michael Wahl
Projektmanager ECM at E.ON
M: +49 173 511 0234
michael.wahl@westnetz.de

Thank you very much
for your attention

Renewables
Grid Initiative 

Nature Networks Webinar
Jun 9, 2022, 12:00 PM

Rewild E.DIS' corridors in the Oder-Delta – we're currently evaluating first ideas for impactful E.ON lighthouse projects

UNITED NATIONS DECADE ON
**ECOSYSTEM
RESTORATION**
2021-2030



We want to demonstrate the benefits of wilder **nature** through the rewilding of diverse European landscapes, and to **inspire and enable others** to **engage in rewilding**



e.on **e.dis** 's contribution

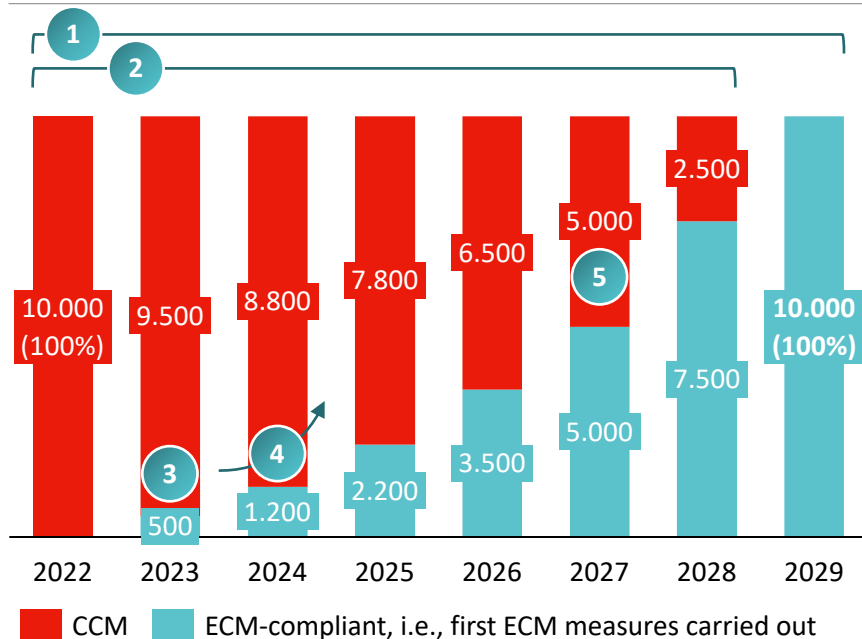
Create **valuable biotopes** under **E.DIS' 110kV powerline corridors** in the Oder-Delta, e.g., to **improve living conditions** for **bisons & eagles**



Joint idea & close
collaboration with Group
Sustainability

ECM will replace conventional Corridor Mgmt. step by step – both approaches will coexist until full-scale ECM operationalization

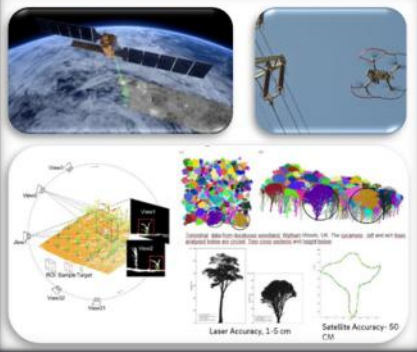
Exemplary ECM ramp-up at a GER DSO until end of 2029 in [ha]



Takeaways

- 1 The ECM budget covers all additional costs up to full-scale ECM operationalization
- 2 CCM will still be necessary in those areas where we did not start to operationalize ECM yet
- 3 Initially, we operationalize ECM in areas where 1) ECM can contribute to securing concessions, 2) maintenance is due anyways, and/or 3) we expect low resistance from stakeholders
- 4 Focus on few hectares in the first years to then increase the annual ECM operationalization per hectare rate year to year
- 5 Gain experience before operationalizing ECM in areas where we expect higher resistance from stakeholders

All DSOs need to determine their ECM ramp-up individually



Ecological Corridor Management

What will the ecological corridor management process with digital tools look like?

Mapping of biotopes



- Classification of tree species and biotopes
- Verification of actual vegetation borders
- Transparency on VDE distances

Planning of vegetation management measures

- Prioritization of areas to be planned ecologically
 - Planning of future measures for ecological vegetation management for each area
- *Contractors get assigned with the realization of the planned measures*



Vegetation Monitoring



- Regular examination of the vegetation to ensure
 - sustainability of the taken measures
 - execution of measures according to ecological rules and standards