



Le réseau  
de transport  
d'électricité

# Creating high voltage power lines green corridors: how to demonstrate a win-win strategy?

Amélie LAFRAGETTE – Sustainable Department of RTE  
29th of April 2021  
RGI Best practice webinar



**10 to 200 m wide**

**20 % in Forested area**

**100 000 km**  
of high and very high voltage aerial networks  
(63 000 to 400 000 volts)

**48 000 ha**

**400 000 ha**





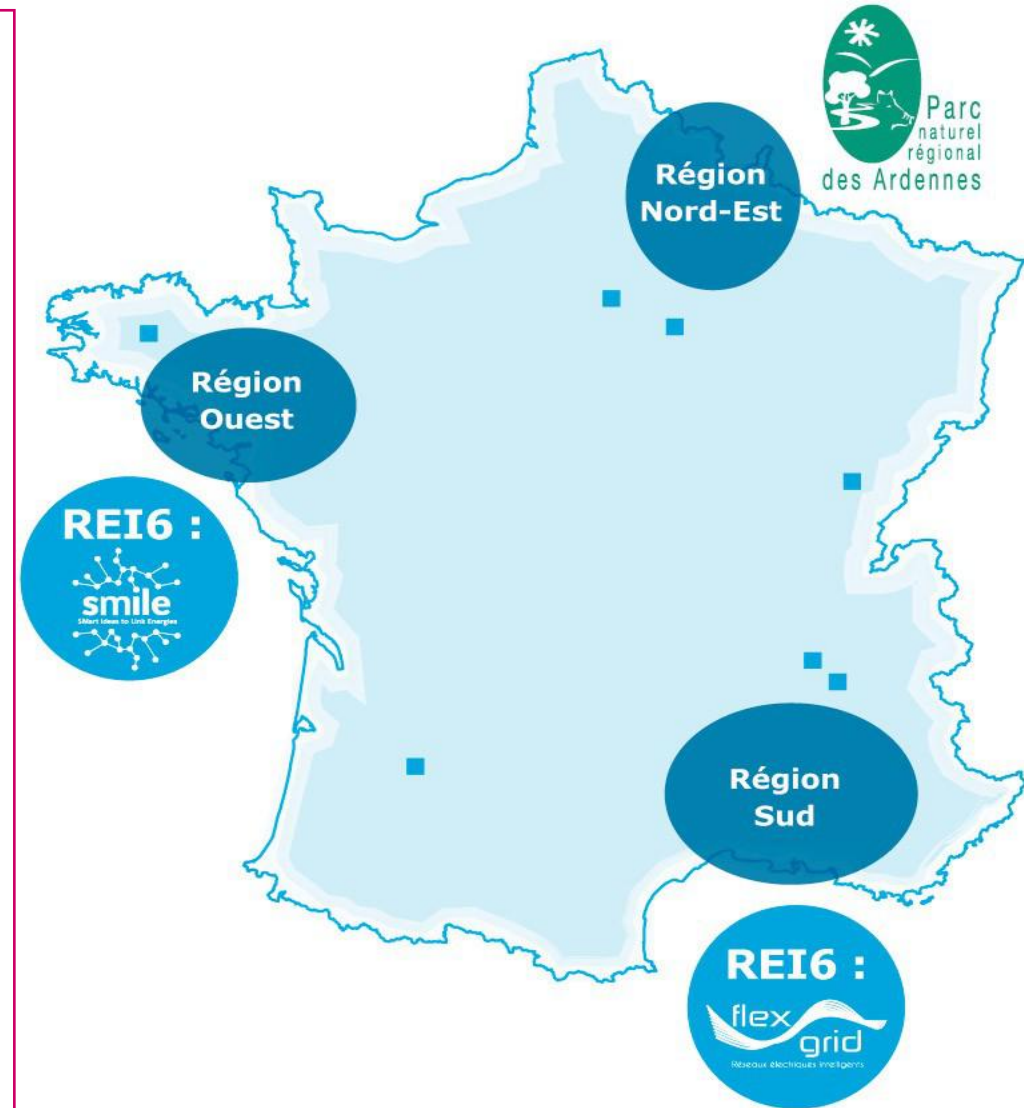
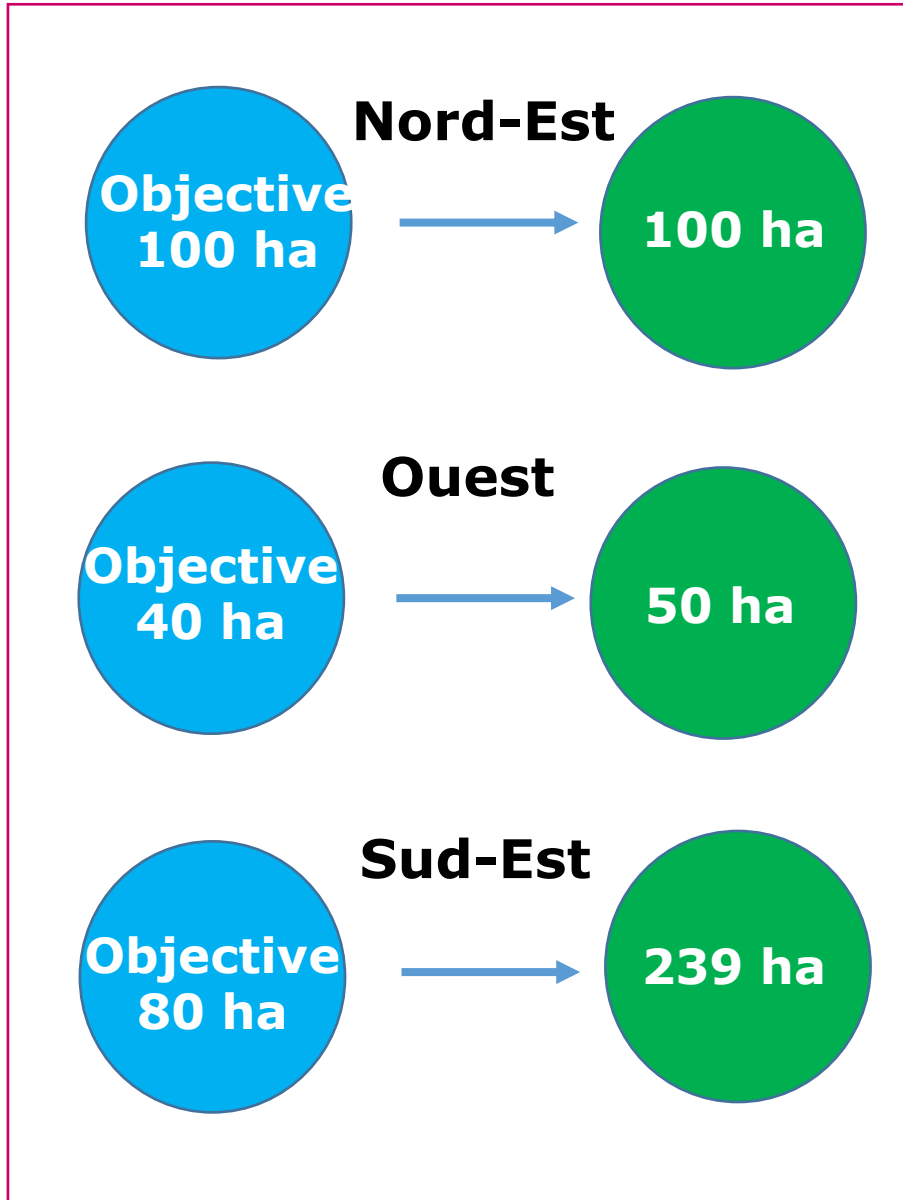
# BELIVE PROJECT

- A Pilot study to develop expertise and feedback for vegetation maintenance
- To Size at a regional scale, organizational and financial support
- A triple goal : benefits for vegetation cost, local partners and biodiversity

**2018-2021**



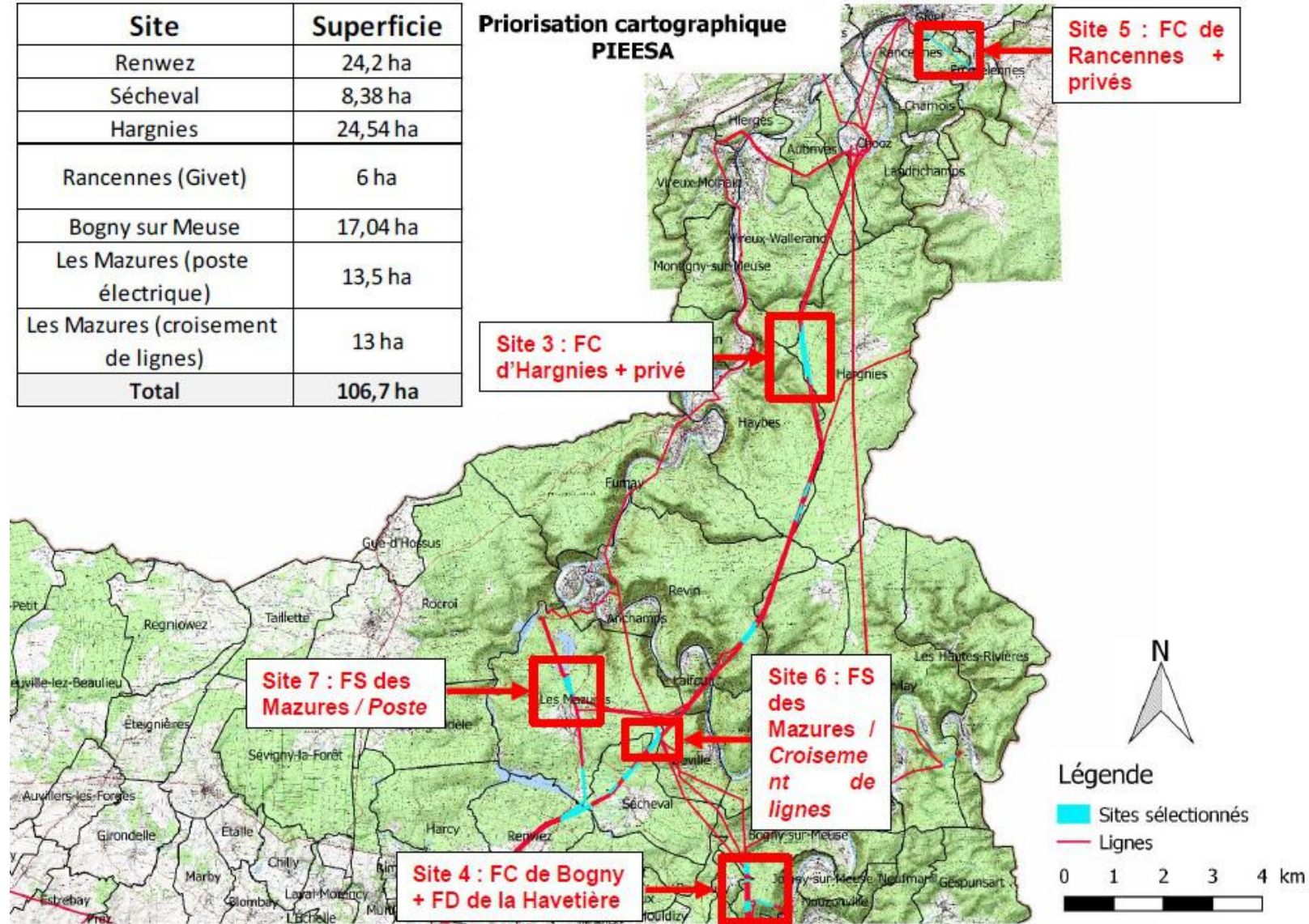
# Objective per region



# BELIVE NORD-EST

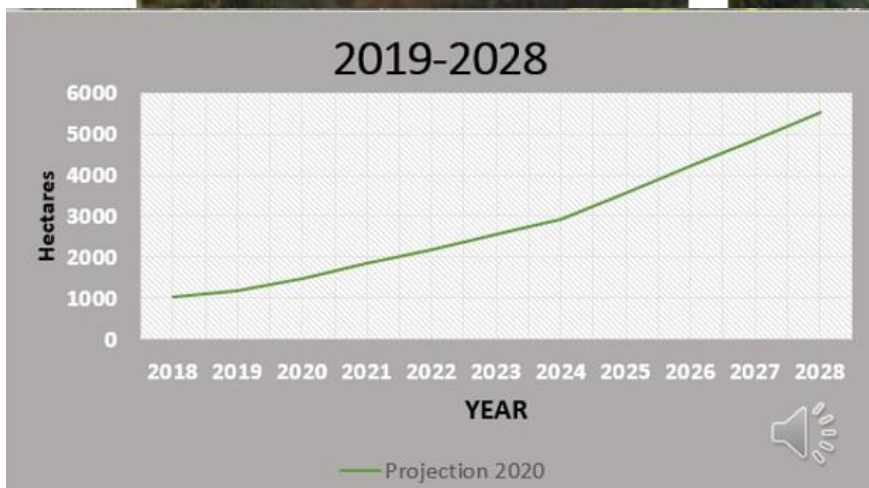
Site	Superficie
Renwez	24,2 ha
Sécheval	8,38 ha
Hargnies	24,54 ha
Rancennes (Givet)	6 ha
Bogny sur Meuse	17,04 ha
Les Mazures (poste électrique)	13,5 ha
Les Mazures (croisement de lignes)	13 ha
<b>Total</b>	<b>106,7 ha</b>

Priorisation cartographique  
PIEESA





**NEW  
VEGETATION  
MANAGEMENT  
POLITIC in  
construction**



# NEXT ? Grid4LIFE?



## Improving vegetation management under power lines: an opportunity for biodiversity and green infrastructure in Europe

**Conservations actions** – ~500 hectares of forest corridors in 4 EU countries

**Monitoring and impact assessment** - Identification and quantification of environmental, financial and social impacts of IVM

**Knowledge exchange, communication** and dissemination



Thanks a lot for your attention