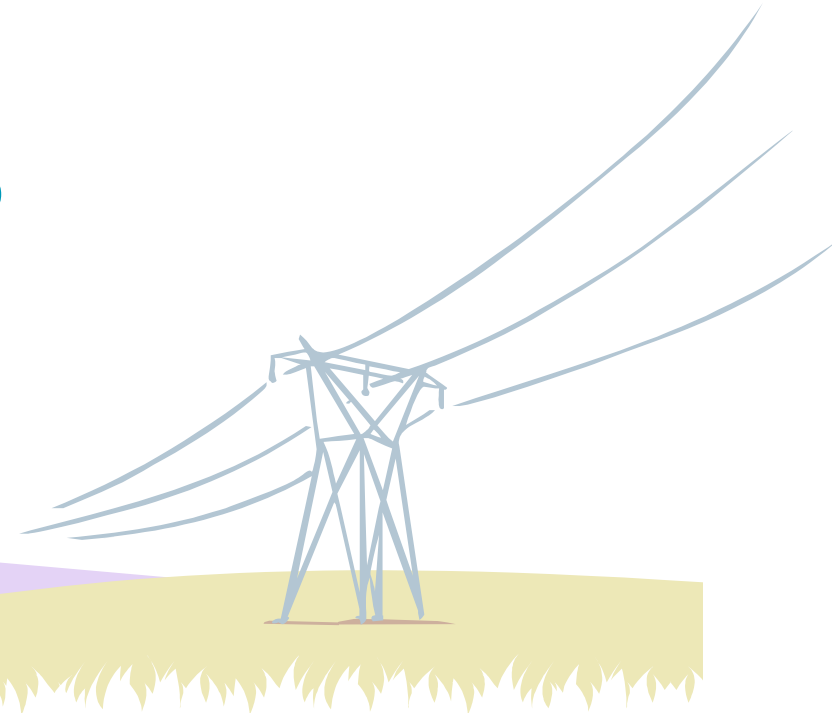
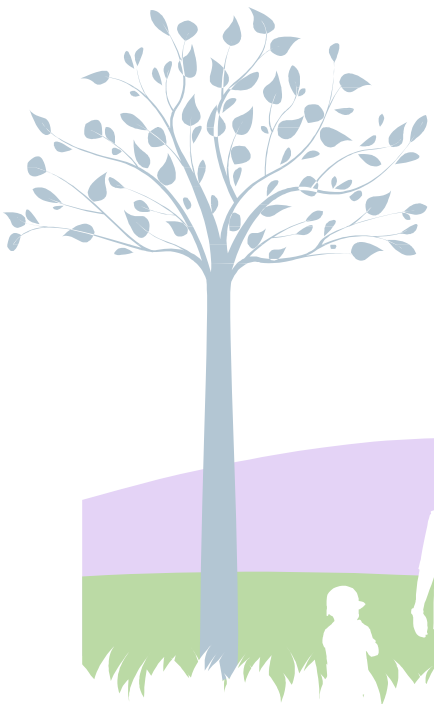


# **RED ELÉCTRICA** DE ESPAÑA

## **RGI PCI Workshop**

**22nd October 2013**





## LICENSING, PERMITTING AND AUTHORISATION IN SPAIN

### ◆ Sequence of permits

- Statement on environmental impact
- Administrative authorisation
- Approval of the construction project
- Statement of public interest
- Construction permit

### ◆ Competent authority

- Spanish administration for “primary” transmission grid 400 kV
- Regional administration for “secondary” transmission grid under 400 kV

### ◆ Threats

- Increasing role of local administration, even municipalities
- Growing public opposition and organisation of opposing groups
- Many other social concerns regarded as environmental impact



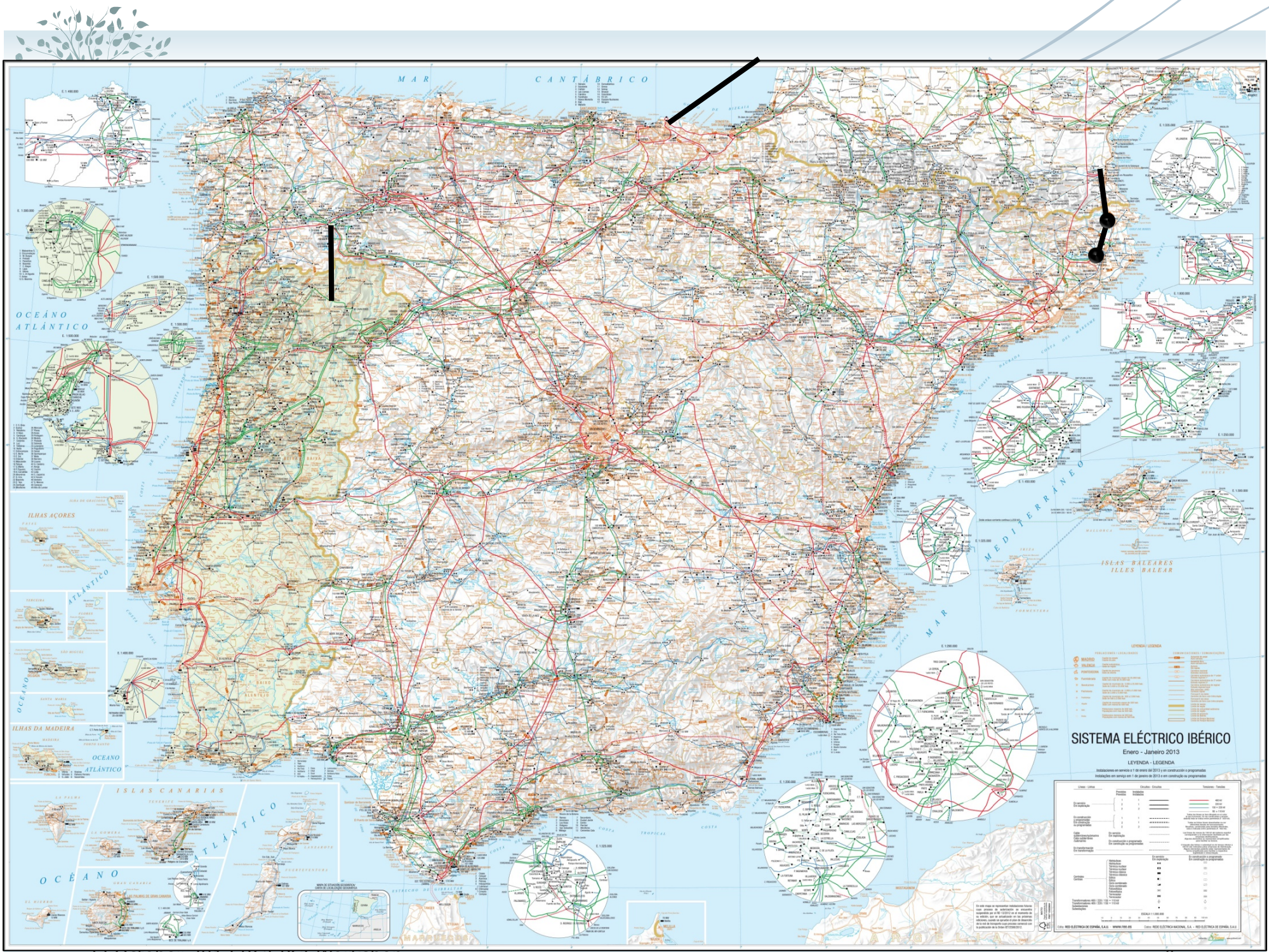
## PCI PROJECTS IN SPAIN

### ◆ **Increasing interconnection capacity with France**

- Line Bescanó-Santa Llogaia, DC 400 kV under construction
- Line Santa Llogaia-Baixas (France) HVDC 2\*1000 MVA under construction
- Line Gatica-Cubnezais (France) HVDC 2\*1000 MVA submarine cable, at the stage of feasibility studies
- Phase shift transformer in Arkale

### ◆ **Increasing interconnection capacity with Portugal**

- Line Fontefria-Vilafria, DC 400 kV, under environmental evaluation



**SISTEMA ELÉCTRICO IBÉRICO**  
Enero - Janeiro 2013

LEYENDA - LEGENDA  
Instalaciones en servicio y en curso del 2013 y en construcción o programadas  
Instalações em serviço em 1 de janeiro de 2013 e em construção ou programadas

Clase Línea	Simbolos	Clase Subestación	Simbolos
Troncales	[Red line]	110 kV	[Red circle]
Interregionales	[Green line]	220 kV	[Green circle]
Regionales	[Blue line]	330 kV	[Blue circle]
Locales	[Yellow line]	400 kV	[Yellow circle]
Interregionales	[Green line]	500 kV	[Green circle]
Regionales	[Blue line]	765 kV	[Blue circle]
Locales	[Yellow line]	1000 kV	[Yellow circle]
Troncales	[Red line]	1500 kV	[Red circle]
Interregionales	[Green line]	2000 kV	[Green circle]
Regionales	[Blue line]	3000 kV	[Blue circle]
Locales	[Yellow line]	4000 kV	[Yellow circle]



## EXPECTATIONS FROM PCI PROCESS

- ◆ **Concentrate on environmental evaluation, disregarding claims for:**
  - Necessity of the project
  - Effects on health of 50 Hz electromagnetic fields
  - Visual impact
  - Impact on the market value of affected land and properties
  - NIMBY effects



## EXPECTATIONS FROM PCI PROCESS

- ◆ **EU statement on the project interest to implement the European energy policies**
  - Counterbalance opinions regarding the need for the project
- ◆ **Timely environmental evaluation for “faster and more efficient permitting procedures”**
  - Prevent procedures lasting for years without any added value
- ◆ **Decision by a “single coordinating authority” of Member State in a “one-stop-shop” approach**
  - Prevent languishing in multiple regional and local administrations
- ◆ **EU assesses project compliance with European environmental common policies**
  - Prevent claims by administrations and environmental groups
- ◆ **Member state commitment to issue permits and authorisations within “time limits”**



## THE MAIN PILLARS

- ◆ **An organised environmental consultation period within time limits**
- ◆ **A fair environmental evaluation disregarding non-environmental issues** (need, effects on health, visual impact, impact on the market value of affected land and properties, NIMBY considerations, etc.)
- ◆ **A single decisive authority representing the Member State**
- ◆ **A time limit for final decision**
- ◆ **A strong involvement of EU**

