

# Collaboration on nature conservation



**NABU experience with 50Hertz grid project Bertikow-Pasewalk**

23 October 2014, Umweltforum Berlin

Eric Neuling, Policy Officer for Power Grids and Nature Conservation



# Content

1. Why participation in BESTGRID?
2. NABU's role and activities
3. Importance of nature protection in the planning region
4. Experiences of collaboration
5. Outcome of collaboration
6. Lessons learned

Photo: C. Hager



# Reasons for Participating in BESTGRID

- NABU is partner of BirdLife International
- Climate protection calls for more renewable energies and grids

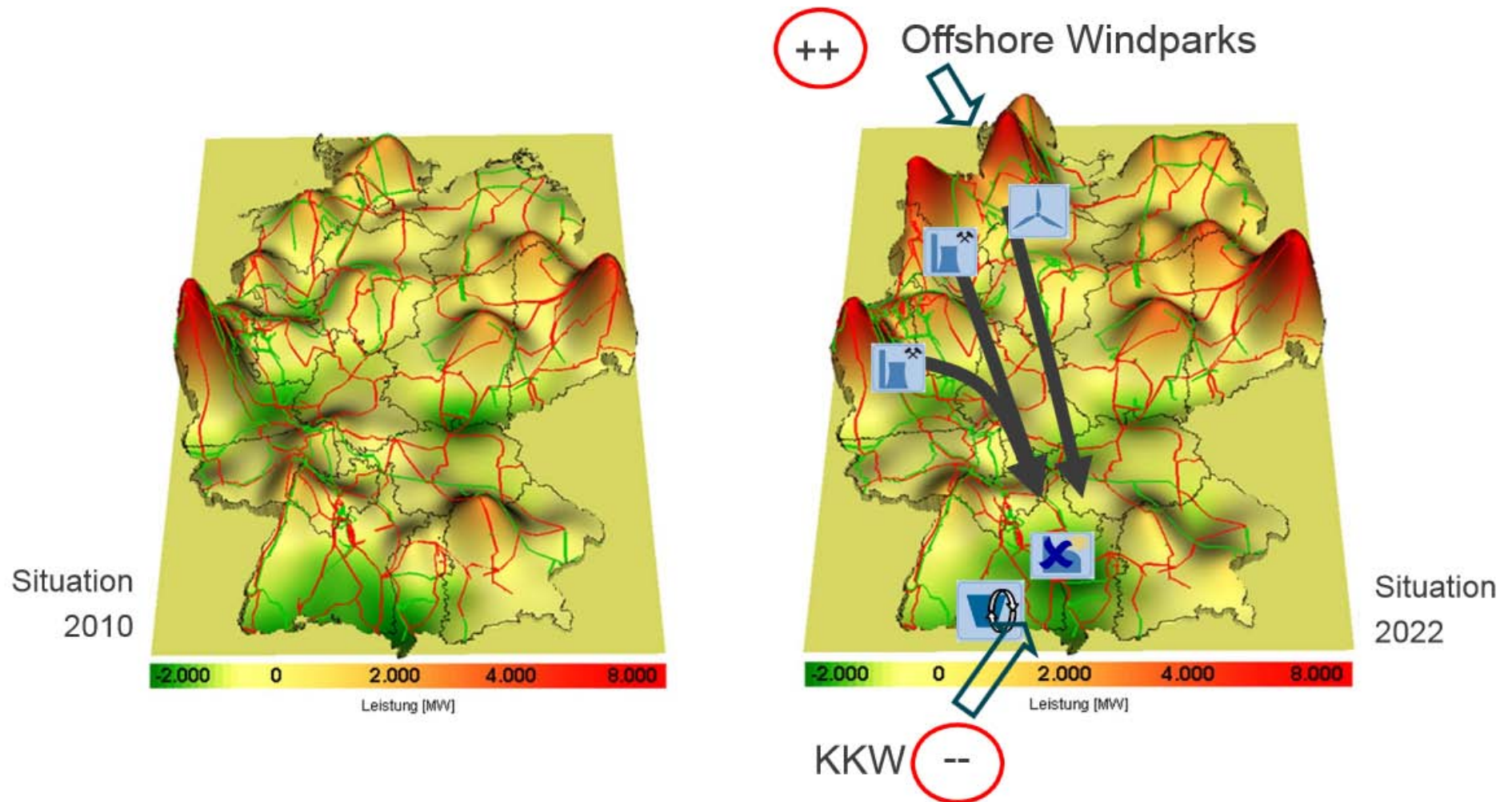


**BEST  
GRID**



Renewables   
Grid Initiative

# Reasons for Participating in BESTGRID



Source: Amprion

# Reasons for Participating in BESTGRID

- NABU is partner of BirdLife International
- Climate protection calls for more renewable energies and grids
- Bertikow-Pasewalk is fixed by law
- Solutions compatible with nature need to be found
- Certain chances for nature protection through lining management and compensation

**BEST  
GRID**



Renewables   
Grid Initiative



# NABU's role and activities

- Attending information events & scopings
- Stakeholder mapping
- Support for Environmental Assessment and advise for scoping studies (areal alternative routing of corridors, site protection, bird protection)
- Informing and recruiting of local/ voluntary conservationists
- Realizing two round tables with local stakeholders and the TSO
- Site visits with local stakeholders and the TSO

Photo: NABU/E. Neuling



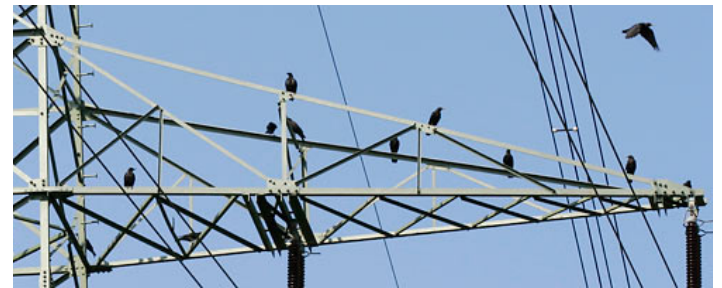
# Importance of site protection



Existing power lines near Grünow (UM), Photo: NABU/E. Neuling

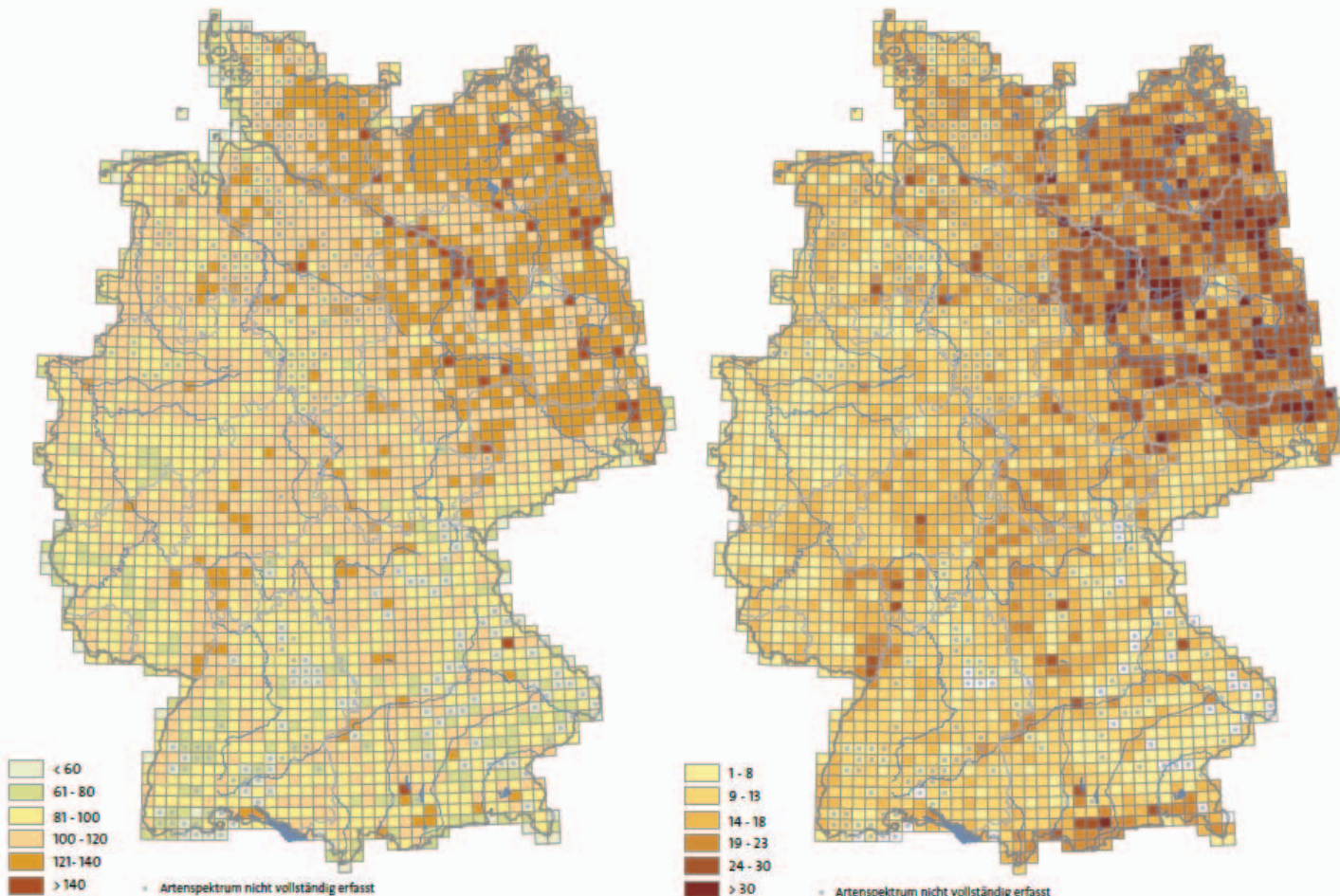
# Importance of bird protection

- Collision risk especially for migratory and resting birds and large breeding birds
- Loss of breeding and foraging areas under overhead lines for ground breeders
- Extensively used pole bases attract rodents and their predators → indirect risk for ground breeders nearby





# Importance of bird protection



Anzahl der Brutvogelarten je TK25 in den Jahren 2005-2009 aus ADEBAR (Atlas Deutscher Brutvogelarten, Gedeon et al. 2014). – Number of breeding bird species per topographical map 1:25.000 (c. 120 km<sup>2</sup>) between 2005 and 2009 from ADEBAR (Atlas of German Breeding Birds, Gedeon et al. 2014).

Anzahl von Triggerarten je TK25 (c. 120 km<sup>2</sup>) in den Jahren 2005-2009. – Number of trigger species (species triggering SPA classifications) per topographical map 1:25.000 (c. 120 km<sup>2</sup>) between 2005 and 2009.

Source: DDA (2014)

# Experiences of collaboration - Stakeholders

## POSITIVE

- Uncomplicated and unrestricted selection of possible stakeholders between TSO and NABU
- Participation mainly from local authority attendants
- Informal ways to place demands are possible for all stakeholders
- Demands are treated unprejudiced by TSO

## NEGATIVE

- Randomized participation by only a few NGO conservationists
- Importance of participation at that state of planning is not recognized/ Impact of power line on nature might be less relevant than other threats
- Little Information flow from local NGOs
- Occasional distrust of single stakeholders towards cooperation with TSO

# Experiences of collaboration – Events/ Meetings

## POSITIVE

- Productive discussions at information and round table events
- Not very numerous but different stakeholders present
- Satisfactory evaluation of first NABU round table in Pasewalk (rating 1,2 : 5)
- Complete event documentation and additional information by 50Hertz

Photo: DUH/L. Becker

## NEGATIVE

- Too little participation by local NGOs at events
- Uncertainty about 50Hertz handling with proposals



# Experiences of collaboration - Planing

## POSITIVE

- Detailed cartographical material presented from 50Hertz
- Exclusion of SPAs from the rough lining corridor
- Demanded alternative corridor option became integrated in the alternative portfolio
- Ecological lining management taken into consideration by 50Hertz in general on all future grid projects

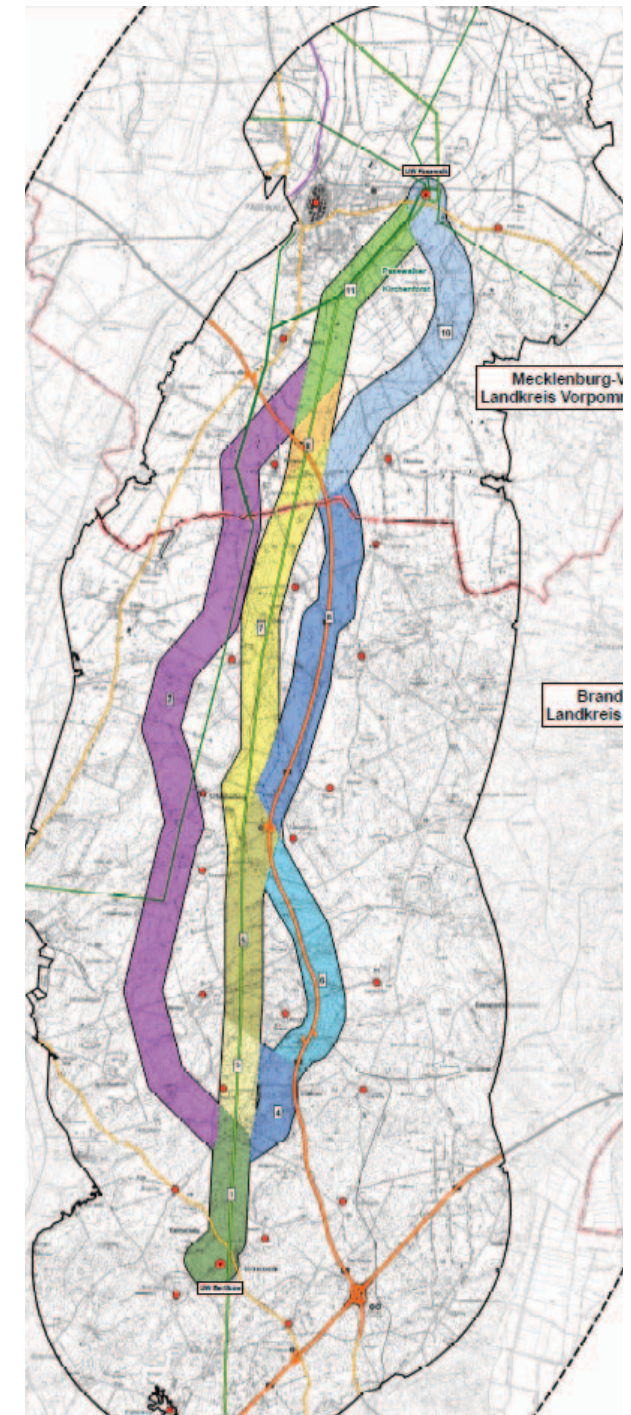
## NEGATIVE

- Current lack of data on bird population and distribution
  - Deviating conception on:
    - data acquisition
    - upper lashing of biotopes
    - bird protection markers
    - pole designs
- between NABU and 50Hertz
- Tight legal boundaries for TSO



# Outcome of collaboration

- Informal ways to place demands for an environmentally friendly grid development directly and on additional channels (like at Round Table)
- Getting direct feedback from TSO and placing direct feedback on TSO plans
- Creating confidence and a constructive work basis on both sides
- TSO recognizes NABU at not a hard-line opponent but critical and constructive partner



# Lesson's learned

- More involvement of stakeholders necessary, esp. local NGOs - but lack of time and possibly more urgent conflicts to deal with
- Quick reaction by TSO on demands in terms of achieving more acceptance
- TSO's formal arrangement is restricted by regulation authority and legal boundaries
- Certain restrictions remain rather stiff → further negotiation required
- Improved recognition for accountability of local NGOs within the informal and formal planning procedure needed
- Stakeholders attitude towards grid planning differs between projects





**Thank you!**

Eric Neuling, NABU Head Quarters, Charitéstr. 3, D-10117 Berlin  
Mail: [Eric.Neuling@NABU.de](mailto:Eric.Neuling@NABU.de), Tel. +49 (0)30 284 984 1812

**BEST  
GRID**